

Cks1 rabbit pAb**Cat#: orb764859 (Manual)**

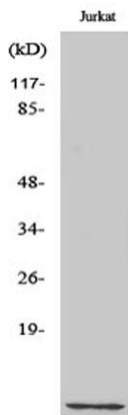
For research use only. Not intended for diagnostic use.

| | |
|---------------------------------|---|
| Product Name | Cks1 rabbit pAb |
| Host species | Rabbit |
| Applications | WB;IF;ELISA |
| Species Cross-Reactivity | Human;Mouse |
| Recommended dilutions | Western Blot: 1/500 - 1/2000. Immunofluorescence: 1/200 - 1/1000. ELISA: 1/20000. Not yet tested in other applications. |
| Immunogen | The antiserum was produced against synthesized peptide derived from human CKS1. AA range:10-59 |
| Specificity | Cks1 Polyclonal Antibody detects endogenous levels of Cks1 protein. |
| Formulation | Liquid in PBS containing 50% glycerol, 0.5% BSA and 0.02% sodium azide.. |
| Storage | Store at -20°C. Avoid repeated freeze-thaw cycles. |
| Protein Name | Cyclin-dependent kinases regulatory subunit 1 |
| Gene Name | CKS1B |
| Cellular localization | cyclin-dependent protein kinase holoenzyme complex,nucleoplasm,SCF ubiquitin ligase complex, |
| Purification | The antibody was affinity-purified from rabbit antiserum by affinity-chromatography using epitope-specific immunogen. |
| Clonality | Polyclonal |

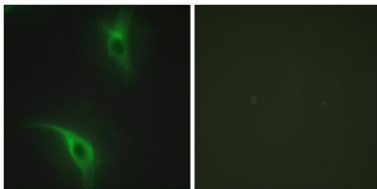
| | |
|--------------------------------|--|
| Concentration | 1 mg/ml |
| Observed band | 9kD |
| Human Gene ID | 1163 |
| Human Swiss-Prot Number | P61024 |
| Alternative Names | CKS1B; CKS1; PNAS-143; PNAS-16; Cyclin-dependent kinases regulatory subunit 1; CKS-1 |

Background

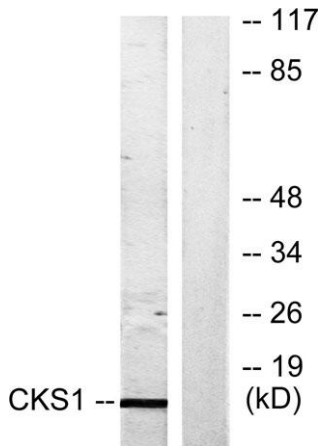
CKS1B protein binds to the catalytic subunit of the cyclin dependent kinases and is essential for their biological function. The CKS1B mRNA is found to be expressed in different patterns through the cell cycle in HeLa cells, which reflects a specialized role for the encoded protein. At least two transcript variants have been identified for this gene, and it appears that only one of them encodes a protein. [provided by RefSeq, Sep 2008],



Western Blot analysis of various cells using Cks1 Polyclonal Antibody cells nucleus extracted by Minute TM Cytoplasmic and Nuclear Fractionation kit (SC-003, Invent biotech, MN, USA).



Immunofluorescence analysis of HeLa cells, using CKS1 Antibody. The picture on the right is blocked with the synthesized peptide.



Western blot analysis of lysates from Jurkat cells, treated with serum 20% 15', using CKS1 Antibody. The lane on the right is blocked with the synthesized peptide.