

CIDE-B rabbit pAb**Cat#: orb764858 (Manual)**

For research use only. Not intended for diagnostic use.

| | |
|---------------------------------|--|
| Product Name | CIDE-B rabbit pAb |
| Host species | Rabbit |
| Applications | WB;IHC;IF;ELISA |
| Species Cross-Reactivity | Human;Mouse |
| Recommended dilutions | Western Blot: 1/500 - 1/2000. Immunohistochemistry: 1/100 - 1/300. Immunofluorescence: 1/200 - 1/1000. ELISA: 1/40000. Not yet tested in other applications. |
| Immunogen | The antiserum was produced against synthesized peptide derived from human CIDEB. AA range:91-140 |
| Specificity | CIDE-B Polyclonal Antibody detects endogenous levels of CIDE-B protein. |
| Formulation | Liquid in PBS containing 50% glycerol, 0.5% BSA and 0.02% sodium azide.. |
| Storage | Store at -20°C. Avoid repeated freeze-thaw cycles. |
| Protein Name | Cell death activator CIDE-B |
| Gene Name | CIDEB |
| Cellular localization | intracellular,lipid particle,cytosol,perinuclear region of cytoplasm, |
| Purification | The antibody was affinity-purified from rabbit antiserum by affinity-chromatography using epitope-specific immunogen. |
| Clonality | Polyclonal |

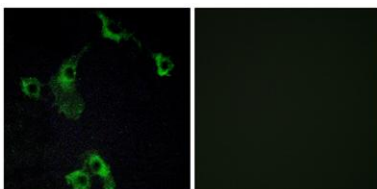
| | |
|--------------------------------|--|
| Concentration | 1 mg/ml |
| Observed band | 24kD |
| Human Gene ID | 27141 |
| Human Swiss-Prot Number | Q9UHD4 |
| Alternative Names | CIDEB; Cell death activator CIDE-B; Cell death-inducing DFFA-like effector B |

Background

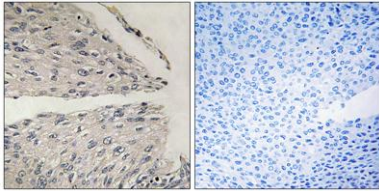
function: Activates apoptosis., similarity: Contains 1 CIDE-N domain., subunit: Inhibited by DFFB. Interacts with DFFA and DFFB., tissue specificity: Highly expressed in liver and small intestine and, at lower levels, in colon, kidney and spleen.,



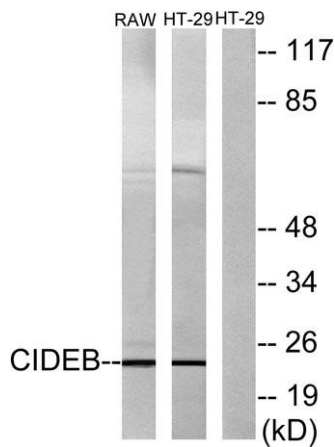
Western Blot analysis of various cells using CIDE-B Polyclonal Antibody



Immunofluorescence analysis of COS7 cells, using CIDEB Antibody. The picture on the right is blocked with the synthesized peptide.



Immunohistochemistry analysis of paraffin-embedded human cervix caecinoma tissue, using CIDEB Antibody. The picture on the right is blocked with the synthesized peptide.



Western blot analysis of lysates from HT-29 and RAW264.7 cells, using CIDEB Antibody. The lane on the right is blocked with the synthesized peptide.