

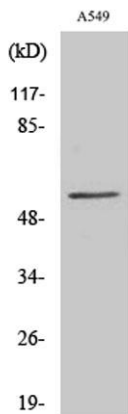
CHST2 rabbit pAb**Cat#: orb764856 (Manual)**

For research use only. Not intended for diagnostic use.

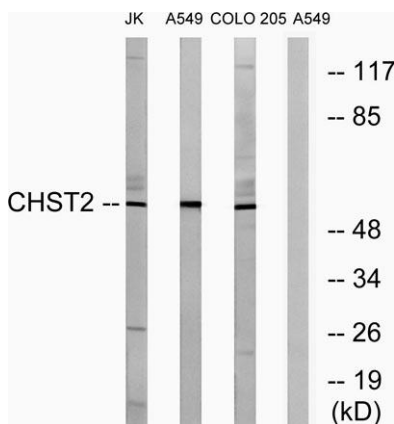
Product Name	CHST2 rabbit pAb
Host species	Rabbit
Applications	WB;ELISA
Species Cross-Reactivity	Human;Rat;Mouse;
Recommended dilutions	Western Blot: 1/500 - 1/2000. ELISA: 1/10000. Not yet tested in other applications.
Immunogen	The antiserum was produced against synthesized peptide derived from human CHST2. AA range:1-50
Specificity	CHST2 Polyclonal Antibody detects endogenous levels of CHST2 protein.
Formulation	Liquid in PBS containing 50% glycerol, 0.5% BSA and 0.02% sodium azide..
Storage	Store at -20°C. Avoid repeated freeze-thaw cycles.
Protein Name	Carbohydrate sulfotransferase 2
Gene Name	CHST2
Cellular localization	Golgi apparatus, trans-Golgi network membrane ; Single-pass type II membrane protein .
Purification	The antibody was affinity-purified from rabbit antiserum by affinity-chromatography using epitope-specific immunogen.
Clonality	Polyclonal

Concentration	1 mg/ml
Observed band	58kD
Human Gene ID	9435
Human Swiss-Prot Number	Q9Y4C5
Alternative Names	CHST2; GN6ST; Carbohydrate sulfotransferase 2; Galactose/N-acetylglucosamine/N-acetylglucosamine 6-O-sulfotransferase 2; GST-2; N-acetylglucosamine 6-O-sulfotransferase 1; GlcNAc6ST-1; Gn6ST-1

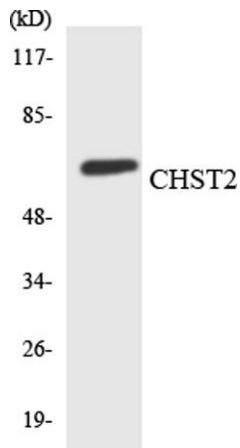
Background This locus encodes a sulfotransferase protein. The encoded enzyme catalyzes the sulfation of a nonreducing N-acetylglucosamine residue, and may play a role in biosynthesis of 6-sulfosialyl Lewis X antigen. [provided by RefSeq, Aug 2011],



Western Blot analysis of various cells using CHST2 Polyclonal Antibody



Western blot analysis of lysates from A549, COLO, and Jurkat cells, using CHST2 Antibody. The lane on the right is blocked with the synthesized peptide.



Western blot analysis of the lysates from K562 cells using CHST2 antibody.