

Chr-A rabbit pAb**Cat#: orb764855 (Manual)**

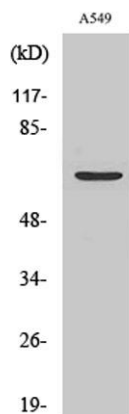
For research use only. Not intended for diagnostic use.

Product Name	Chr-A rabbit pAb
Host species	Rabbit
Applications	WB;IHC;IF;ELISA
Species Cross-Reactivity	Human;Mouse;Rat
Recommended dilutions	Western Blot: 1/500 - 1/2000. Immunohistochemistry: 1/100 - 1/300. ELISA: 1/10000. Not yet tested in other applications.
Immunogen	The antiserum was produced against synthesized peptide derived from human Chr-A. AA range:311-360
Specificity	Chr-A Polyclonal Antibody detects endogenous levels of Chr-A protein.
Formulation	Liquid in PBS containing 50% glycerol, 0.5% BSA and 0.02% sodium azide..
Storage	Store at -20°C. Avoid repeated freeze-thaw cycles.
Protein Name	Chromogranin-A
Gene Name	CHGA
Cellular localization	[Serpinin]: Secreted . Cytoplasmic vesicle, secretory vesicle . Pyroglutaminated serpinin localizes to secretory vesicle. .; Cytoplasmic vesicle, secretory vesicle . Cytoplasmic vesicle, secretory vesicle, neuronal dense core vesicle . Secreted . Associated with the secretory granule membrane through direct interaction to SCG3 that in turn binds to cholesterol-enriched lipid rafts in intragranular conditions. In pituitary gonadotropes, located in large secretory granules. .

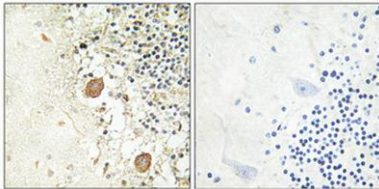
Purification	The antibody was affinity-purified from rabbit antiserum by affinity-chromatography using epitope-specific immunogen.
Clonality	Polyclonal
Concentration	1 mg/ml
Observed band	68kD
Human Gene ID	1113
Human Swiss-Prot Number	P10645
Alternative Names	CHGA; Chromogranin-A; CgA; Pituitary secretory protein I; SP-I

Background

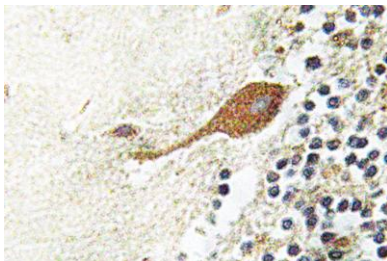
The protein encoded by this gene is a member of the chromogranin/secretogranin family of neuroendocrine secretory proteins. It is found in secretory vesicles of neurons and endocrine cells. This gene product is a precursor to three biologically active peptides; vasostatin, pancreastatin, and parastatin. These peptides act as autocrine or paracrine negative modulators of the neuroendocrine system. Two other peptides, catestatin and chromofungin, have antimicrobial activity and antifungal activity, respectively. Two transcript variants encoding different isoforms have been found for this gene. [provided by RefSeq, Sep 2014],



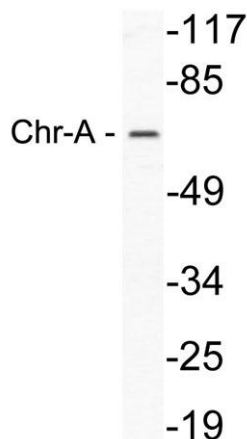
Western Blot analysis of various cells using Chr-A Polyclonal Antibody



Immunohistochemical analysis of paraffin-embedded Human brain. Antibody was diluted at 1:100(4° overnight). High-pressure and temperature Tris-EDTA,pH8.0 was used for antigen retrieval. Negative contrl (right) obtained from antibody was pre-absorbed by immunogen peptide.



Immunohistochemistry analysis of Chr-A antibody in paraffin-embedded human brain tissue.



Western blot analysis of lysate from A549 cells, using Chr-A antibody.