

c-Fgr rabbit pAb**Cat#: orb764833 (Manual)**

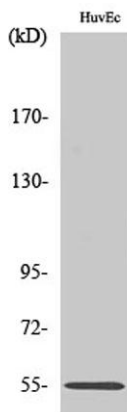
For research use only. Not intended for diagnostic use.

Product Name	c-Fgr rabbit pAb
Host species	Rabbit
Applications	WB;IHC;IF;ELISA
Species Cross-Reactivity	Human;Mouse;Rat
Recommended dilutions	Western Blot: 1/500 - 1/2000. Immunohistochemistry: 1/100 - 1/300. ELISA: 1/5000. Not yet tested in other applications.
Immunogen	The antiserum was produced against synthesized peptide derived from human N-terminal FGR. AA range:61-110
Specificity	c-Fgr Polyclonal Antibody detects endogenous levels of c-Fgr protein.
Formulation	Liquid in PBS containing 50% glycerol, 0.5% BSA and 0.02% sodium azide..
Storage	Store at -20°C. Avoid repeated freeze-thaw cycles.
Protein Name	Tyrosine-protein kinase Fgr
Gene Name	FGR
Cellular localization	Cell membrane ; Lipid-anchor ; Cytoplasmic side . Cell membrane; Peripheral membrane protein; Cytoplasmic side. Cell projection, ruffle membrane. Cytoplasm, cytosol. Cytoplasm, cytoskeleton. Mitochondrion inner membrane . Mitochondrion intermembrane space . Detected in mitochondrial intermembrane space and at inner membranes (By similarity). Colocalizes with actin fibers at membrane ruffles. Detected at plasma membrane lipid rafts. .

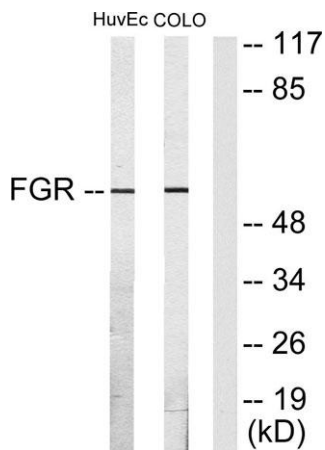
Purification	The antibody was affinity-purified from rabbit antiserum by affinity-chromatography using epitope-specific immunogen.
Clonality	Polyclonal
Concentration	1 mg/ml
Observed band	55kD
Human Gene ID	2268
Human Swiss-Prot Number	P09769
Alternative Names	FGR; SRC2; Tyrosine-protein kinase Fgr; Gardner-Rasheed feline sarcoma viral; v-fgr) oncogene homolog; Proto-oncogene c-Fgr; p55-Fgr; p58-Fgr; p58c-Fgr

Background

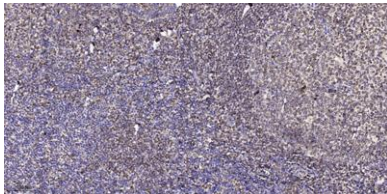
This gene is a member of the Src family of protein tyrosine kinases (PTKs). The encoded protein contains N-terminal sites for myristylation and palmitoylation, a PTK domain, and SH2 and SH3 domains which are involved in mediating protein-protein interactions with phosphotyrosine-containing and proline-rich motifs, respectively. The protein localizes to plasma membrane ruffles, and functions as a negative regulator of cell migration and adhesion triggered by the beta-2 integrin signal transduction pathway. Infection with Epstein-Barr virus results in the overexpression of this gene. Multiple alternatively spliced variants, encoding the same protein, have been identified. [provided by RefSeq, Jul 2008],



Western Blot analysis of various cells using c-Fgr Polyclonal Antibody



Western blot analysis of lysates from HUVEC and COLO205 cells, using FGR Antibody. The lane on the right is blocked with the synthesized peptide.



Immunohistochemical analysis of paraffin-embedded human tonsil. 1, Antibody was diluted at 1:200(4° overnight). 2, Tris-EDTA,pH9.0 was used for antigen retrieval. 3,Secondary antibody was diluted at 1:200(room temperature, 45min).