

Cerebellin 4 rabbit pAb**Cat#: orb764831 (Manual)**

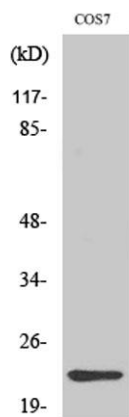
For research use only. Not intended for diagnostic use.

Product Name	Cerebellin 4 rabbit pAb
Host species	Rabbit
Applications	WB;IHC;IF;ELISA
Species Cross-Reactivity	Human;Mouse;Monkey
Recommended dilutions	Western Blot: 1/500 - 1/2000. Immunohistochemistry: 1/100 - 1/300. ELISA: 1/40000. Not yet tested in other applications.
Immunogen	The antiserum was produced against synthesized peptide derived from human CBLN4. AA range:141-190
Specificity	Cerebellin 4 Polyclonal Antibody detects endogenous levels of Cerebellin 4 protein.
Formulation	Liquid in PBS containing 50% glycerol, 0.5% BSA and 0.02% sodium azide..
Storage	Store at -20°C. Avoid repeated freeze-thaw cycles.
Protein Name	Cerebellin-4
Gene Name	CBLN4
Cellular localization	Secreted . Cell junction, synapse . Detected at GABAergic synapses. .
Purification	The antibody was affinity-purified from rabbit antiserum by affinity-chromatography using epitope-specific immunogen.
Clonality	Polyclonal

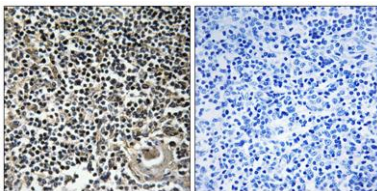
Concentration	1 mg/ml
Observed band	27kD
Human Gene ID	140689
Human Swiss-Prot Number	Q9NTU7
Alternative Names	CBLN4; CBLNL1; Cerebellin-4; Cerebellin-like glycoprotein 1

Background

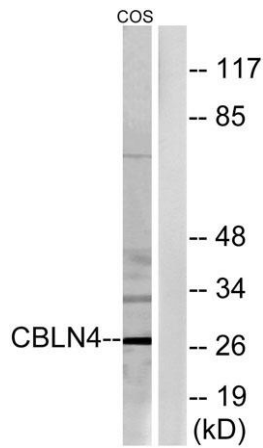
This gene encodes a member of a family of small secreted proteins containing C1Q domains. Members of this family are involved in regulation of neurexin signalling during synapse development. The mouse homolog of the protein encoded by this gene competes with netrin to bind to the deleted in colorectal cancer receptor. [provided by RefSeq, Aug 2012],



Western Blot analysis of various cells using Cerebellin 4 Polyclonal Antibody



Immunohistochemistry analysis of paraffin-embedded human thymus gland tissue, using CBLN4 Antibody. The picture on the right is blocked with the synthesized peptide.



Western blot analysis of lysates from COS cells, using CBLN4 Antibody. The lane on the right is blocked with the synthesized peptide.