

Cerebellin 1 rabbit pAb**Cat#: orb764829 (Manual)**

For research use only. Not intended for diagnostic use.

Product Name	Cerebellin 1 rabbit pAb
Host species	Rabbit
Applications	WB;ELISA
Species Cross-Reactivity	Human;Mouse;Rat
Recommended dilutions	Western Blot: 1/500 - 1/2000. ELISA: 1/10000. Not yet tested in other applications.
Immunogen	The antiserum was produced against synthesized peptide derived from human CBLN1. AA range:131-180
Specificity	Cerebellin 1 Polyclonal Antibody detects endogenous levels of Cerebellin 1 protein.
Formulation	Liquid in PBS containing 50% glycerol, 0.5% BSA and 0.02% sodium azide..
Storage	Store at -20°C. Avoid repeated freeze-thaw cycles.
Protein Name	Cerebellin-1
Gene Name	CBLN1
Cellular localization	Secreted . Cell junction, synapse, postsynaptic cell membrane .
Purification	The antibody was affinity-purified from rabbit antiserum by affinity-chromatography using epitope-specific immunogen.
Clonality	Polyclonal

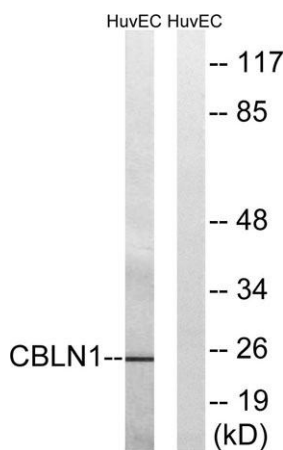
Concentration	1 mg/ml
Observed band	25kD
Human Gene ID	869
Human Swiss-Prot Number	P23435
Alternative Names	CBLN1; Cerebellin-1; Precerebellin

Background

This gene encodes a cerebellum-specific precursor protein, precerebellin, with similarity to the globular (non-collagen-like) domain of complement component C1qB. Precerebellin is processed to give rise to several derivatives, including the hexadecapeptide, cerebellin, which is highly enriched in postsynaptic structures of Purkinje cells. Cerebellin has also been found in human and rat adrenals, where it has been shown to enhance the secretory activity of this gland. [provided by RefSeq, Aug 2008],



Western Blot analysis of various cells using Cerebellin 1 Polyclonal Antibody



Western blot analysis of lysates from HUVEC cells, using CBLN1 Antibody. The lane on the right is blocked with the synthesized peptide.



Explore. Bioreagents.

www.biorbyt.com