

CD69 rabbit pAb**Cat#: orb764789 (Manual)**

For research use only. Not intended for diagnostic use.

Product Name	CD69 rabbit pAb
Host species	Rabbit
Applications	WB;ELISA
Species Cross-Reactivity	Human;Mouse;Rat
Recommended dilutions	Western Blot: 1/500 - 1/2000. ELISA: 1/40000. Not yet tested in other applications.
Immunogen	The antiserum was produced against synthesized peptide derived from human CD69. AA range:101-150
Specificity	CD69 Polyclonal Antibody detects endogenous levels of CD69 protein.
Formulation	Liquid in PBS containing 50% glycerol, 0.5% BSA and 0.02% sodium azide..
Storage	Store at -20°C. Avoid repeated freeze-thaw cycles.
Protein Name	Early activation antigen CD69
Gene Name	CD69
Cellular localization	Membrane; Single-pass type II membrane protein.
Purification	The antibody was affinity-purified from rabbit antiserum by affinity-chromatography using epitope-specific immunogen.
Clonality	Polyclonal

Concentration 1 mg/ml

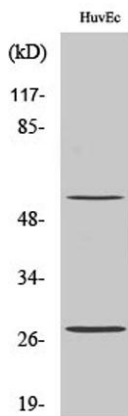
Observed band 23kD

Human Gene ID 969

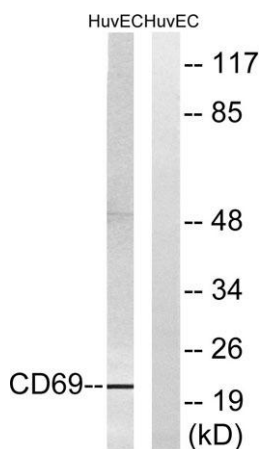
Human Swiss-Prot Number Q07108

Alternative Names CD69; CLEC2C; Early activation antigen CD69; Activation inducer molecule; AIM; BL-AC/P26; C-type lectin domain family 2 member C; EA1; Early T-cell activation antigen p60; GP32/28; Leukocyte surface antigen Leu-23; MLR-3; CD antigen CD69

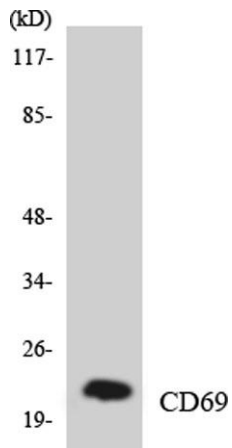
Background This gene encodes a member of the calcium dependent lectin superfamily of type II transmembrane receptors. Expression of the encoded protein is induced upon activation of T lymphocytes, and may play a role in proliferation. Furthermore, the protein may act to transmit signals in natural killer cells and platelets. [provided by RefSeq, Aug 2011],



Western Blot analysis of various cells using CD69 Polyclonal Antibody diluted at 1:1000



Western blot analysis of lysates from HUVEC cells, using CD69 Antibody. The lane on the right is blocked with the synthesized peptide.



Western blot analysis of the lysates from HUVEC cells using CD69 antibody.