

**CCRL1 rabbit pAb****Cat#: orb764766 (Manual)**

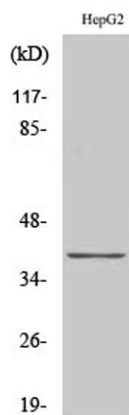
For research use only. Not intended for diagnostic use.

<b>Product Name</b>	CCRL1 rabbit pAb
<b>Host species</b>	Rabbit
<b>Applications</b>	WB;IF;ELISA
<b>Species Cross-Reactivity</b>	Human;Mouse
<b>Recommended dilutions</b>	Western Blot: 1/500 - 1/2000. Immunofluorescence: 1/200 - 1/1000. ELISA: 1/40000. Not yet tested in other applications.
<b>Immunogen</b>	The antiserum was produced against synthesized peptide derived from human CCRL1. AA range:291-340
<b>Specificity</b>	CCRL1 Polyclonal Antibody detects endogenous levels of CCRL1 protein.
<b>Formulation</b>	Liquid in PBS containing 50% glycerol, 0.5% BSA and 0.02% sodium azide..
<b>Storage</b>	Store at -20°C. Avoid repeated freeze-thaw cycles.
<b>Protein Name</b>	C-C chemokine receptor type 11
<b>Gene Name</b>	CCRL1
<b>Cellular localization</b>	Early endosome . Recycling endosome . Cell membrane ; Multi-pass membrane protein . Predominantly localizes to endocytic vesicles, and upon stimulation by the ligand is internalized via caveolae. Once internalized, the ligand dissociates from the receptor, and is targeted to degradation while the receptor is recycled back to the cell membrane.
<b>Purification</b>	The antibody was affinity-purified from rabbit antiserum by affinity-chromatography using epitope-specific immunogen.

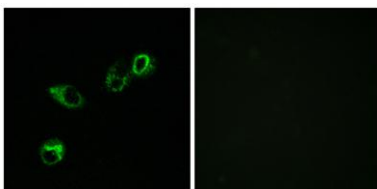
<b>Clonality</b>	Polyclonal
<b>Concentration</b>	1 mg/ml
<b>Observed band</b>	40kD
<b>Human Gene ID</b>	51554
<b>Human Swiss-Prot Number</b>	Q9NPB9
<b>Alternative Names</b>	CCRL1; CCBP2; CCR11; VSHK1; C-C chemokine receptor type 11; C-C CKR-11; CC-CKR-11; CCR-11; CC chemokine receptor-like 1; CCRL1; CCX CKR

**Background**

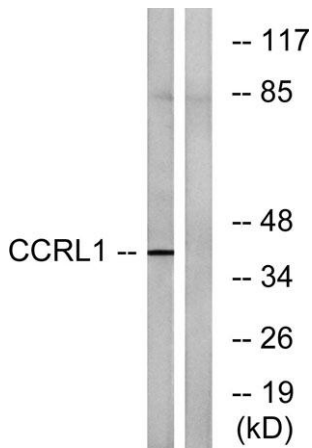
The protein encoded by this gene is a member of the G protein-coupled receptor family, and is a receptor for C-C type chemokines. This receptor has been shown to bind dendritic cell- and T cell-activated chemokines including CCL19/ELC, CCL21/SLC, and CCL25/TECK. A pseudogene of this gene is found on chromosome 6. Alternatively spliced transcript variants encoding the same protein have been described. [provided by RefSeq, Jul 2013],



**Western Blot analysis of various cells using CCRL1 Polyclonal Antibody**



**Immunofluorescence analysis of MCF7 cells, using CCRL1 Antibody. The picture on the right is blocked with the synthesized peptide.**



**Western blot analysis of lysates from HepG2 cells, using CCRL1 Antibody. The lane on the right is blocked with the synthesized peptide.**