

**Catenin- $\gamma$  rabbit pAb****Cat#: orb764743 (Manual)**

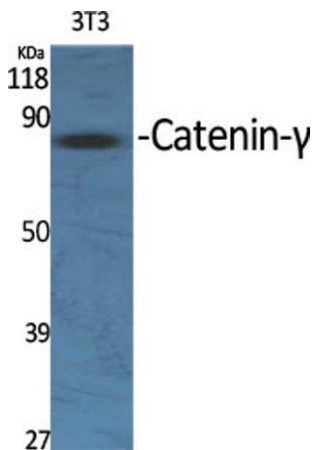
For research use only. Not intended for diagnostic use.

<b>Product Name</b>	Catenin- $\gamma$ rabbit pAb
<b>Host species</b>	Rabbit
<b>Applications</b>	WB;IHC;IF;ELISA
<b>Species Cross-Reactivity</b>	Human;Mouse;Rat
<b>Recommended dilutions</b>	Western Blot: 1/500 - 1/2000. Immunohistochemistry: 1/100 - 1/300. Immunofluorescence: 1/200 - 1/1000. ELISA: 1/20000. Not yet tested in other applications.
<b>Immunogen</b>	The antiserum was produced against synthesized peptide derived from human Catenin-gamma. AA range:696-745
<b>Specificity</b>	Catenin- $\gamma$ Polyclonal Antibody detects endogenous levels of Catenin- $\gamma$ protein.
<b>Formulation</b>	Liquid in PBS containing 50% glycerol, 0.5% BSA and 0.02% sodium azide..
<b>Storage</b>	Store at -20°C. Avoid repeated freeze-thaw cycles.
<b>Protein Name</b>	Junction plakoglobin
<b>Gene Name</b>	JUP
<b>Cellular localization</b>	Cell junction, adherens junction . Cell junction, desmosome . Cytoplasm, cytoskeleton . Membrane ; Peripheral membrane protein . Cytoplasmic in a soluble and membrane-associated form.
<b>Purification</b>	The antibody was affinity-purified from rabbit antiserum by affinity-chromatography using epitope-specific immunogen.

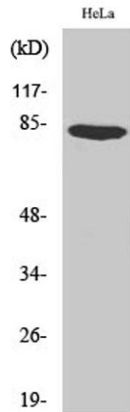
<b>Clonality</b>	Polyclonal
<b>Concentration</b>	1 mg/ml
<b>Observed band</b>	82kD
<b>Human Gene ID</b>	3728
<b>Human Swiss-Prot Number</b>	P14923
<b>Alternative Names</b>	JUP; CTNNG; DP3; Junction plakoglobin; Catenin gamma; Desmoplakin III; Desmoplakin-3

**Background**

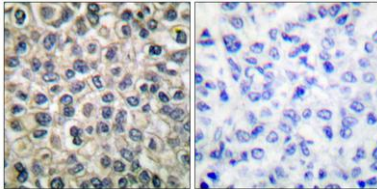
This gene encodes a major cytoplasmic protein which is the only known constituent common to submembranous plaques of both desmosomes and intermediate junctions. This protein forms distinct complexes with cadherins and desmosomal cadherins and is a member of the catenin family since it contains a distinct repeating amino acid motif called the armadillo repeat. Mutation in this gene has been associated with Naxos disease. Alternative splicing occurs in this gene; however, not all transcripts have been fully described. [provided by RefSeq, Jul 2008],



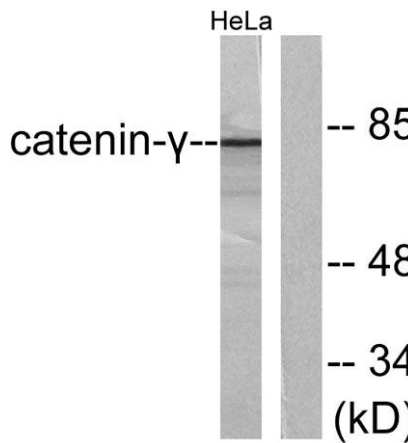
**Western Blot analysis of various cells using Catenin- $\gamma$  Polyclonal Antibody diluted at 1:2000**



Western Blot analysis of HeLa cells using Catenin- $\gamma$  Polyclonal Antibody diluted at 1:2000



Immunohistochemistry analysis of paraffin-embedded human breast carcinoma tissue, using Catenin-gamma Antibody. The picture on the right is blocked with the synthesized peptide.



Western blot analysis of lysates from HeLa cells, using Catenin-gamma Antibody. The lane on the right is blocked with the synthesized peptide.