

Casein Kinase I α rabbit pAb**Cat#: orb764722 (Manual)**

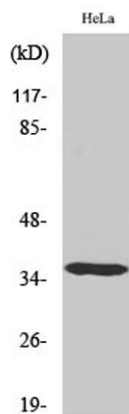
For research use only. Not intended for diagnostic use.

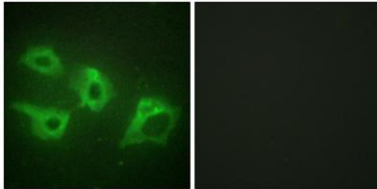
Product Name	Casein Kinase I α rabbit pAb
Host species	Rabbit
Applications	WB;IHC;IF;ELISA
Species Cross-Reactivity	Human;Mouse;Rat
Recommended dilutions	Western Blot: 1/500 - 1/2000. Immunohistochemistry: 1/100 - 1/300. Immunofluorescence: 1/200 - 1/1000. ELISA: 1/20000. Not yet tested in other applications.
Immunogen	The antiserum was produced against synthesized peptide derived from human CKI-alpha. AA range:126-175
Specificity	Casein Kinase I α Polyclonal Antibody detects endogenous levels of Casein Kinase I α protein.
Formulation	Liquid in PBS containing 50% glycerol, 0.5% BSA and 0.02% sodium azide..
Storage	Store at -20°C. Avoid repeated freeze-thaw cycles.
Protein Name	Casein kinase I isoform alpha
Gene Name	CSNK1A1
Cellular localization	Cytoplasm . Cytoplasm, cytoskeleton, microtubule organizing center, centrosome . Chromosome, centromere, kinetochore . Nucleus speckle . Cytoplasm, cytoskeleton, cilium basal body . Cytoplasm, cytoskeleton, spindle . Localizes to the centrosome in interphase cells, and to kinetochore fibers during mitosis. Also recruited to the keratin cytoskeleton (PubMed:23902688)..

Purification	The antibody was affinity-purified from rabbit antiserum by affinity-chromatography using epitope-specific immunogen.
Clonality	Polyclonal
Concentration	1 mg/ml
Observed band	35kD
Human Gene ID	1452
Human Swiss-Prot Number	P48729
Alternative Names	CSNK1A1; Casein kinase I isoform alpha; CKI-alpha; CK1

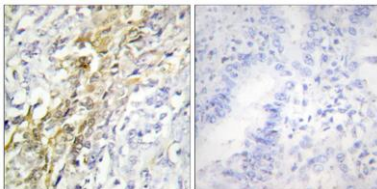
Background

catalytic activity:ATP + a protein = ADP + a phosphoprotein.,function:Casein kinases are operationally defined by their preferential utilization of acidic proteins such as caseins as substrates. It can phosphorylate a large number of proteins. Participates in Wnt signaling. Phosphorylates CTNNB1 on 'Ser-45'.,similarity:Belongs to the protein kinase superfamily.,similarity:Belongs to the protein kinase superfamily, CK1 Ser/Thr protein kinase family. Casein kinase I subfamily.,similarity:Contains 1 protein kinase domain.,subunit:Monomer. Interacts with the Axin complex.,

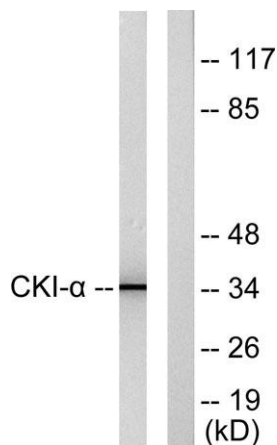
**Western Blot analysis of various cells using Casein Kinase I α Polyclonal Antibody**



Immunofluorescence analysis of HeLa cells, using CKI-alpha Antibody. The picture on the right is blocked with the synthesized peptide.



Immunohistochemistry analysis of paraffin-embedded human lung carcinoma tissue, using CKI-alpha Antibody. The picture on the right is blocked with the synthesized peptide.



Western blot analysis of lysates from HeLa cells, using CKI-alpha Antibody. The lane on the right is blocked with the synthesized peptide.