

CARD 10 rabbit pAb**Cat#: orb764714 (Manual)**

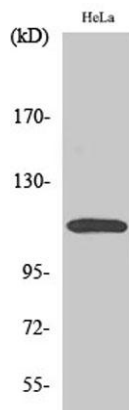
For research use only. Not intended for diagnostic use.

Product Name	CARD 10 rabbit pAb
Host species	Rabbit
Applications	WB;IHC;IF;ELISA
Species Cross-Reactivity	Human;Mouse
Recommended dilutions	Western Blot: 1/500 - 1/2000. Immunohistochemistry: 1/100 - 1/300. Immunofluorescence: 1/200 - 1/1000. ELISA: 1/10000. Not yet tested in other applications.
Immunogen	The antiserum was produced against synthesized peptide derived from human CARD10. AA range:481-530
Specificity	CARD 10 Polyclonal Antibody detects endogenous levels of CARD 10 protein.
Formulation	Liquid in PBS containing 50% glycerol, 0.5% BSA and 0.02% sodium azide..
Storage	Store at -20°C. Avoid repeated freeze-thaw cycles.
Protein Name	Caspase recruitment domain-containing protein 10
Gene Name	CARD10
Cellular localization	Cytoplasm .
Purification	The antibody was affinity-purified from rabbit antiserum by affinity-chromatography using epitope-specific immunogen.
Clonality	Polyclonal

Concentration	1 mg/ml
Observed band	120kD
Human Gene ID	29775
Human Swiss-Prot Number	Q9BWT7
Alternative Names	CARD10; CARMA3; Caspase recruitment domain-containing protein 10; CARD-containing MAGUK protein 3; Carma 3

Background

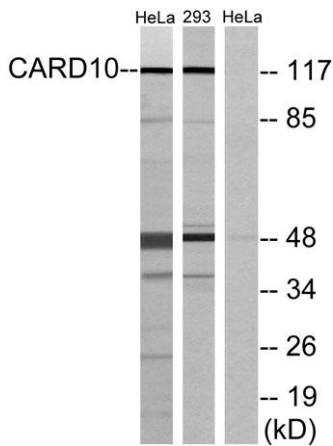
The caspase recruitment domain (CARD) is a protein module that consists of 6 or 7 antiparallel alpha helices. It participates in apoptosis signaling through highly specific protein-protein homophilic interactions. Like several other CARD proteins, CARD10 belongs to the membrane-associated guanylate kinase (MAGUK) family and activates NF-kappa-B (NFkB; see MIM 164011) through BCL10 (MIM 603517) (Wang et al., 2001 [PubMed 11259443]).[supplied by OMIM, Mar 2008],



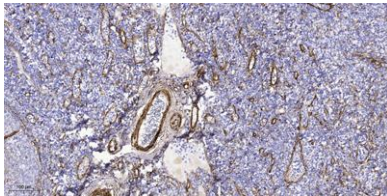
Western Blot analysis of various cells using CARD 10 Polyclonal Antibody



Immunofluorescence analysis of HeLa cells, using CARD10 Antibody. The picture on the right is blocked with the synthesized peptide.



Western blot analysis of lysates from HeLa and 293 cells, using CARD10 Antibody. The lane on the right is blocked with the synthesized peptide.



Immunohistochemical analysis of paraffin-embedded human tonsil. 1, Tris-EDTA, pH9.0 was used for antigen retrieval. 2 Antibody was diluted at 1:200(4° overnight).3,Secondary antibody was diluted at 1:200(room temperature, 45min).