

**CaMKII $\beta$ / $\gamma$  rabbit pAb****Cat#: orb764710 (Manual)**

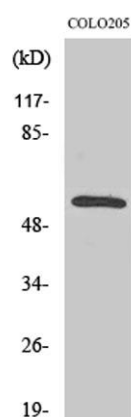
For research use only. Not intended for diagnostic use.

<b>Product Name</b>	CaMKII $\beta$ / $\gamma$ rabbit pAb
<b>Host species</b>	Rabbit
<b>Applications</b>	WB;IF;ELISA
<b>Species Cross-Reactivity</b>	Human;Mouse;Rat
<b>Recommended dilutions</b>	Western Blot: 1/500 - 1/2000. Immunofluorescence: 1/200 - 1/1000. ELISA: 1/20000. Not yet tested in other applications.
<b>Immunogen</b>	The antiserum was produced against synthesized peptide derived from human CaMK2 beta/gamma. AA range:509-558
<b>Specificity</b>	CaMKII $\beta$ / $\gamma$ Polyclonal Antibody detects endogenous levels of CaMKII $\beta$ / $\gamma$ protein.
<b>Formulation</b>	Liquid in PBS containing 50% glycerol, 0.5% BSA and 0.02% sodium azide..
<b>Storage</b>	Store at -20°C. Avoid repeated freeze-thaw cycles.
<b>Protein Name</b>	Calcium/calmodulin-dependent protein kinase type II subunit beta/gamma
<b>Gene Name</b>	CAMK2B/CAMK2G
<b>Cellular localization</b>	Sarcoplasmic reticulum membrane ; Peripheral membrane protein ; Cytoplasmic side .
<b>Purification</b>	The antibody was affinity-purified from rabbit antiserum by affinity-chromatography using epitope-specific immunogen.
<b>Clonality</b>	Polyclonal

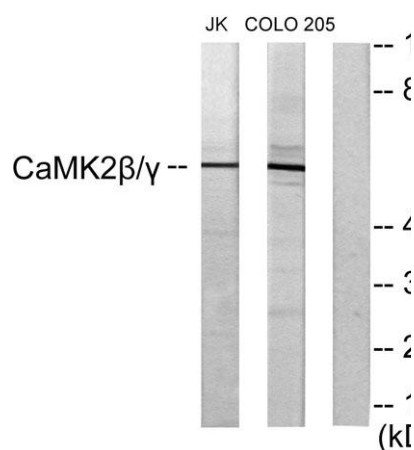
<b>Concentration</b>	1 mg/ml
<b>Observed band</b>	62kD
<b>Human Gene ID</b>	818/816
<b>Human Swiss-Prot Number</b>	Q13555/Q13554
<b>Alternative Names</b>	CAMK2G; CAMK; CAMK-II; CAMKG; Calcium/calmodulin-dependent protein kinase type II subunit gamma; CaM kinase II subunit gamma; CaMK-II subunit gamma; CAMK2B; CAM2; CAMK2; CAMKB; Calcium/calmodulin-dependent protein kinase type II subunit bet

**Background**

The product of this gene is one of the four subunits of an enzyme which belongs to the serine/threonine protein kinase family, and to the Ca(2+)/calmodulin-dependent protein kinase subfamily. Calcium signaling is crucial for several aspects of plasticity at glutamatergic synapses. In mammalian cells the enzyme is composed of four different chains: alpha, beta, gamma, and delta. The product of this gene is a gamma chain. Many alternatively spliced transcripts encoding different isoforms have been described but the full-length nature of all the variants has not been determined.[provided by RefSeq, Mar 2011],



**Western Blot analysis of various cells using CaMKIIβ/γ Polyclonal Antibody**



Western blot analysis of lysates from COLO205 and Jurkat cells, using CaMK2 beta/gamma Antibody. The lane on the right is blocked with the synthesized peptide.