

## Calmodulin rabbit pAb

**Cat#: orb764704 (Manual)**

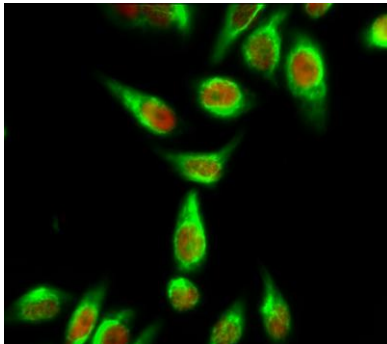
For research use only. Not intended for diagnostic use.

<b>Product Name</b>	Calmodulin rabbit pAb
<b>Host species</b>	Rabbit
<b>Applications</b>	WB;IHC;IF;ELISA
<b>Species Cross-Reactivity</b>	Human;Mouse;Rat
<b>Recommended dilutions</b>	Western Blot: 1/500 - 1/2000. Immunohistochemistry: 1/100 - 1/300. Immunofluorescence: 1/200 - 1/1000. ELISA: 1/10000. Not yet tested in other applications.
<b>Immunogen</b>	The antiserum was produced against synthesized peptide derived from human Calmodulin. AA range:46-95
<b>Specificity</b>	Calmodulin Polyclonal Antibody detects endogenous levels of Calmodulin protein.
<b>Formulation</b>	Liquid in PBS containing 50% glycerol, 0.5% BSA and 0.02% sodium azide..
<b>Storage</b>	Store at -20°C. Avoid repeated freeze-thaw cycles.
<b>Protein Name</b>	Calmodulin
<b>Gene Name</b>	CALM1
<b>Cellular localization</b>	spindle pole,extracellular region,nucleus,nucleoplasm,cytoplasm,centrosome,cytosol,spindle microtubule,plasma membrane,voltage-gated potassium channel complex,sarcomere,growth cone,vesicle,calcium channel complex,G
<b>Purification</b>	The antibody was affinity-purified from rabbit antiserum by affinity-chromatography using epitope-specific immunogen.

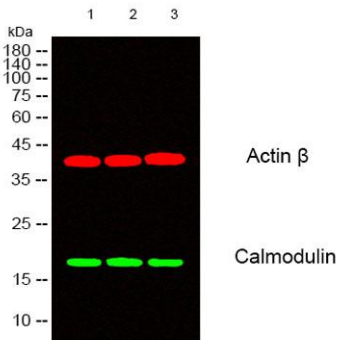
<b>Clonality</b>	Polyclonal
<b>Concentration</b>	1 mg/ml
<b>Observed band</b>	
<b>Human Gene ID</b>	801/805/808
<b>Human Swiss-Prot Number</b>	P62158
<b>Alternative Names</b>	CALM1; CALM; CAM; CAM1; CALM2; CAM2; CAMB; CALM3; CALML2; CAM3; CAMC; CAMIII; Calmodulin; CaM

**Background**

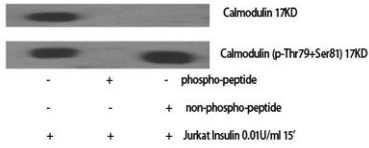
This gene encodes a member of the EF-hand calcium-binding protein family. It is one of three genes which encode an identical calcium binding protein which is one of the four subunits of phosphorylase kinase. Two pseudogenes have been identified on chromosome 7 and X. Multiple transcript variants encoding different isoforms have been found for this gene.[provided by RefSeq, Oct 2009],



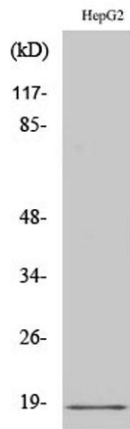
**Immunofluorescence analysis of HeLa cell. 1, Calmodulin Polyclonal Antibody (green) was diluted at 1:200 (4° overnight). (red) was diluted at 1:200 (4° overnight). 2, Goat Anti Rabbit Alexa Fluor 488 Catalog:RS3211 was diluted at 1:1000 (room temperature, 50min). Goat Anti Mouse Alexa Fluor 594 Catalog:RS3608 was diluted at 1:1000 (room temperature, 50min).**



**Western blot analysis of lysates from 1) HuvEc, 2) HepG2, 3) 293 cells, (Green) primary antibody was diluted at 1:1000, 4° over night, secondary antibody (cat:RS23920) was diluted at 1:10000, 37° 1hour. (Red) Actin β Monoclonal Antibody (5B7) (cat:YM3028) antibody was diluted at 1:5000 as loading control, 4° over night, secondary antibody (cat:RS23710) was diluted at 1:10000, 37° 1hour.**



**Western Blot analysis of various cells using Calmodulin Polyclonal Antibody diluted at 1:2000**



**Western Blot analysis of HuvEc cells using Calmodulin Polyclonal Antibody diluted at 1:2000**