

Bub3 rabbit pAb**Cat#: orb764675 (Manual)**

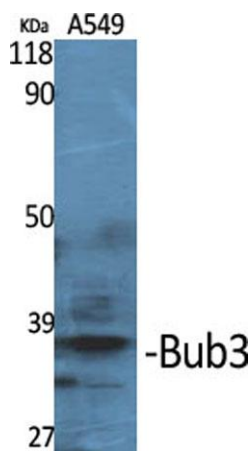
For research use only. Not intended for diagnostic use.

Product Name	Bub3 rabbit pAb
Host species	Rabbit
Applications	WB;IHC;IF;ELISA
Species Cross-Reactivity	Human;Mouse;Rat
Recommended dilutions	Western Blot: 1/500 - 1/2000. Immunohistochemistry: 1/100 - 1/300. Immunofluorescence: 1/200 - 1/1000. ELISA: 1/5000. Not yet tested in other applications.
Immunogen	The antiserum was produced against synthesized peptide derived from human BUB3. AA range:279-328
Specificity	Bub3 Polyclonal Antibody detects endogenous levels of Bub3 protein.
Formulation	Liquid in PBS containing 50% glycerol, 0.5% BSA and 0.02% sodium azide..
Storage	Store at -20°C. Avoid repeated freeze-thaw cycles.
Protein Name	Mitotic checkpoint protein BUB3
Gene Name	BUB3
Cellular localization	Nucleus. Chromosome, centromere, kinetochore . Starts to localize at kinetochores in prometaphase I (Pro-MI) stage and maintains the localization until the metaphase I-anaphase I (MI-AI) transition. .
Purification	The antibody was affinity-purified from rabbit antiserum by affinity-chromatography using epitope-specific immunogen.

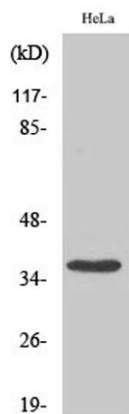
Clonality	Polyclonal
Concentration	1 mg/ml
Observed band	40kD
Human Gene ID	9184
Human Swiss-Prot Number	O43684
Alternative Names	BUB3; Mitotic checkpoint protein BUB3

Background

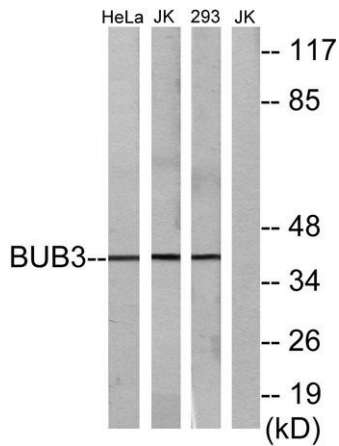
This gene encodes a protein involved in spindle checkpoint function. The encoded protein contains four WD repeat domains and has sequence similarity with the yeast BUB3 protein. Alternate transcriptional splice variants, encoding different isoforms, have been characterized. [provided by RefSeq, Jul 2008],



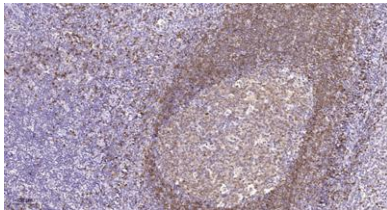
Western Blot analysis of various cells using Bub3 Polyclonal Antibody



Western Blot analysis of 293 cells using Bub3 Polyclonal Antibody



Western blot analysis of lysates from HeLa cells, Jurkat cells, and 293 cells, using BUB3 Antibody. The lane on the right is blocked with the synthesized peptide.



Immunohistochemical analysis of paraffin-embedded human tonsil. 1, Tris-EDTA, pH9.0 was used for antigen retrieval. 2 Antibody was diluted at 1:200(4° overnight).3,Secondary antibody was diluted at 1:200(room temperature, 45min).