

BRMS-1 rabbit pAb**Cat#: orb764666 (Manual)**

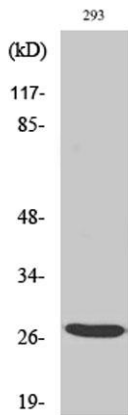
For research use only. Not intended for diagnostic use.

Product Name	BRMS-1 rabbit pAb
Host species	Rabbit
Applications	WB;IHC;IF;ELISA
Species Cross-Reactivity	Human;Mouse;Rat
Recommended dilutions	Western Blot: 1/500 - 1/2000. Immunohistochemistry: 1/100 - 1/300. ELISA: 1/20000. Not yet tested in other applications.
Immunogen	The antiserum was produced against synthesized peptide derived from human BRMS1. AA range:21-70
Specificity	BRMS-1 Polyclonal Antibody detects endogenous levels of BRMS-1 protein.
Formulation	Liquid in PBS containing 50% glycerol, 0.5% BSA and 0.02% sodium azide..
Storage	Store at -20°C. Avoid repeated freeze-thaw cycles.
Protein Name	Breast cancer metastasis-suppressor 1
Gene Name	BRMS1
Cellular localization	Nucleus. Cytoplasm. Predominantly nuclear.
Purification	The antibody was affinity-purified from rabbit antiserum by affinity-chromatography using epitope-specific immunogen.
Clonality	Polyclonal

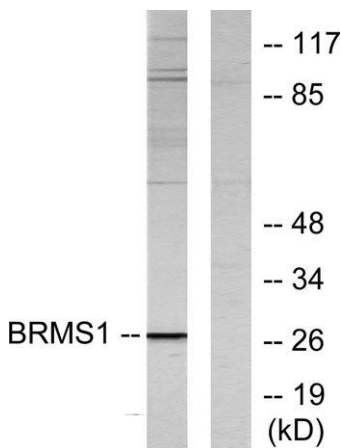
Concentration	1 mg/ml
Observed band	28kD
Human Gene ID	25855
Human Swiss-Prot Number	Q9HCU9
Alternative Names	BRMS1; Breast cancer metastasis-suppressor 1

Background

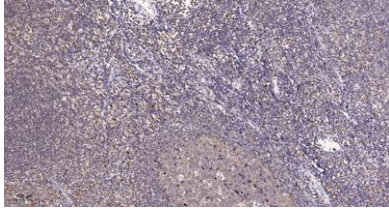
This gene reduces the metastatic potential, but not the tumorigenicity, of human breast cancer and melanoma cell lines. The protein encoded by this gene localizes primarily to the nucleus and is a component of the mSin3a family of histone deacetylase complexes (HDAC). The protein contains two coiled-coil motifs and several imperfect leucine zipper motifs. Alternative splicing results in two transcript variants encoding different isoforms. [provided by RefSeq, Jul 2008],



Western Blot analysis of various cells using BRMS-1 Polyclonal Antibody



Western blot analysis of lysates from 293 cells, using BRMS1 Antibody. The lane on the right is blocked with the synthesized peptide.



Immunohistochemical analysis of paraffin-embedded human tonsil. 1, Tris-EDTA, pH 9.0 was used for antigen retrieval. 2 Antibody was diluted at 1:200 (4° overnight). 3, Secondary antibody was diluted at 1:200 (room temperature, 45 min).