

BRAF35 rabbit pAb**Cat#: orb764661 (Manual)**

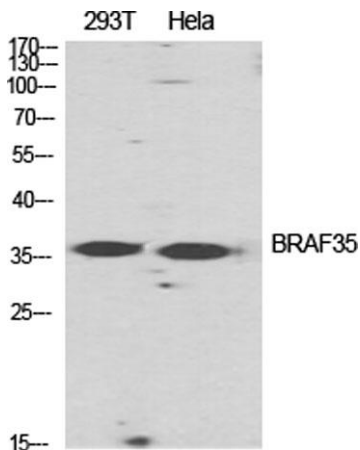
For research use only. Not intended for diagnostic use.

| | |
|---------------------------------|--|
| Product Name | BRAF35 rabbit pAb |
| Host species | Rabbit |
| Applications | WB;IHC;IF;ELISA |
| Species Cross-Reactivity | Human;Mouse; |
| Recommended dilutions | Western Blot: 1/500 - 1/2000. Immunohistochemistry: 1/100 - 1/300. Immunofluorescence: 1/200 - 1/1000. ELISA: 1/20000. Not yet tested in other applications. |
| Immunogen | The antiserum was produced against synthesized peptide derived from human HMG20B. AA range:1-50 |
| Specificity | BRAF35 Polyclonal Antibody detects endogenous levels of BRAF35 protein. |
| Formulation | Liquid in PBS containing 50% glycerol, 0.5% BSA and 0.02% sodium azide.. |
| Storage | Store at -20°C. Avoid repeated freeze-thaw cycles. |
| Protein Name | SWI/SNF-related matrix-associated actin-dependent regulator of chromatin subfamily E member 1-related |
| Gene Name | HMG20B |
| Cellular localization | Nucleus. Chromosome. Localized to condensed chromosomes in mitosis in conjunction with BRCA2. |
| Purification | The antibody was affinity-purified from rabbit antiserum by affinity-chromatography using epitope-specific immunogen. |

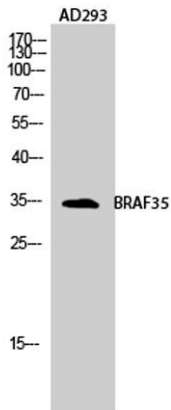
| | |
|--------------------------------|--|
| Clonality | Polyclonal |
| Concentration | 1 mg/ml |
| Observed band | 36kD |
| Human Gene ID | 10362 |
| Human Swiss-Prot Number | Q9P0W2 |
| Alternative Names | HMG20B; BRAF35; HMGX2; HMGXB2; SMARCE1R; SWI/SNF-related matrix-associated actin-dependent regulator of chromatin subfamily E member 1-related; SMARCE1-related protein; BRCA2-associated factor 35; HMG box-containing protein 20B; HMG domain- |

Background

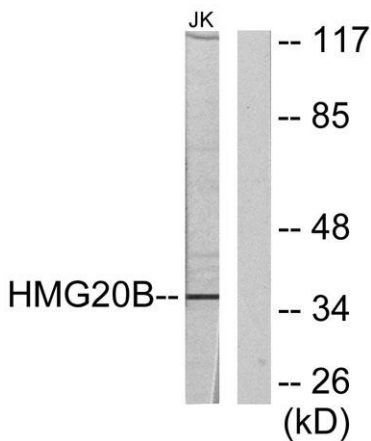
function:Required for correct progression through G2 phase of the cell cycle and entry into mitosis. Required for RCOR1/CoREST mediated repression of neuronal specific gene promoters.
sequence caution:Translation N-terminally extended.
similarity:Contains 1 HMG box DNA-binding domain.
subcellular location:Localized to condensed chromosomes in mitosis in conjunction with BRCA2.
subunit:Component of a BHC histone deacetylase complex that contains HDAC1, HDAC2, HMG20B/BRAF35, AOF2/LSD1, RCOR1/CoREST and PHF21A/BHC80. The BHC complex may also contain ZMYM2, ZNF217, ZMYM3, GSE1 and GTF2I. Interacts with the BRCA2 tumor suppressor protein.
tissue specificity:Ubiquitously expressed in adult tissues.



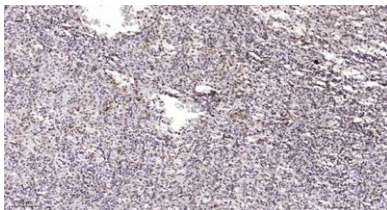
Western Blot analysis of various cells using BRAF35 Polyclonal Antibody diluted at 1:2000 cells nucleus extracted by Minute™ Cytoplasmic and Nuclear Fractionation kit (SC-003, Inventibiotech, MN, USA).



Western Blot analysis of AD293 cells using BRAF35 Polyclonal Antibody diluted at 1:2000 cells nucleus extracted by Minute™ Cytoplasmic and Nuclear Fractionation kit (SC-003, Invent biotech, MN, USA).



Western blot analysis of lysates from Jurkat cells, using HMG20B Antibody. The lane on the right is blocked with the synthesized peptide.



Immunohistochemical analysis of paraffin-embedded human spleen. 1, Antibody was diluted at 1:200 (4° overnight). 2, Tris-EDTA, pH 9.0 was used for antigen retrieval. 3, Secondary antibody was diluted at 1:200 (room temperature, 45min).