

**BMP-5 rabbit pAb****Cat#: orb764653 (Manual)**

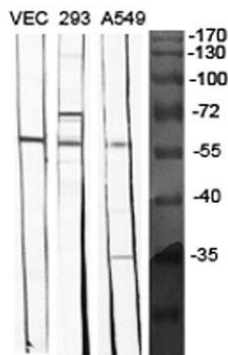
For research use only. Not intended for diagnostic use.

<b>Product Name</b>	BMP-5 rabbit pAb
<b>Host species</b>	Rabbit
<b>Applications</b>	WB;IHC;IF;ELISA
<b>Species Cross-Reactivity</b>	Human;Mouse
<b>Recommended dilutions</b>	Western Blot: 1/500 - 1/2000. Immunohistochemistry: 1/100 - 1/300. ELISA: 1/40000. Not yet tested in other applications.
<b>Immunogen</b>	The antiserum was produced against synthesized peptide derived from human BMP-5. AA range:114-163
<b>Specificity</b>	BMP-5 Polyclonal Antibody detects endogenous levels of BMP-5 protein.
<b>Formulation</b>	Liquid in PBS containing 50% glycerol, 0.5% BSA and 0.02% sodium azide..
<b>Storage</b>	Store at -20°C. Avoid repeated freeze-thaw cycles.
<b>Protein Name</b>	Bone morphogenetic protein 5
<b>Gene Name</b>	BMP5
<b>Cellular localization</b>	Secreted.
<b>Purification</b>	The antibody was affinity-purified from rabbit antiserum by affinity-chromatography using epitope-specific immunogen.
<b>Clonality</b>	Polyclonal

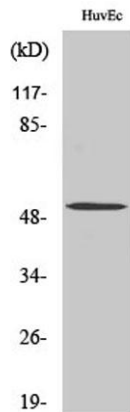
<b>Concentration</b>	1 mg/ml
<b>Observed band</b>	52kD
<b>Human Gene ID</b>	653
<b>Human Swiss-Prot Number</b>	P22003
<b>Alternative Names</b>	BMP5; Bone morphogenetic protein 5; BMP-5

**Background**

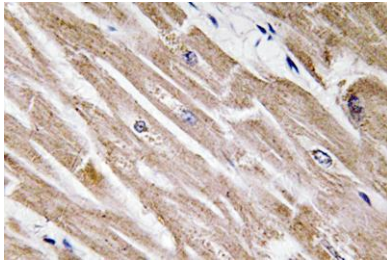
This gene encodes a secreted ligand of the TGF-beta (transforming growth factor-beta) superfamily of proteins. Ligands of this family bind various TGF-beta receptors leading to recruitment and activation of SMAD family transcription factors that regulate gene expression. The encoded preproprotein is proteolytically processed to generate each subunit of the disulfide-linked homodimer, which plays a role in bone and cartilage development. Polymorphisms in this gene may be associated with osteoarthritis in human patients. This gene is differentially regulated in multiple human cancers. This gene encodes distinct protein isoforms that may be similarly proteolytically processed. [provided by RefSeq, Jul 2016],



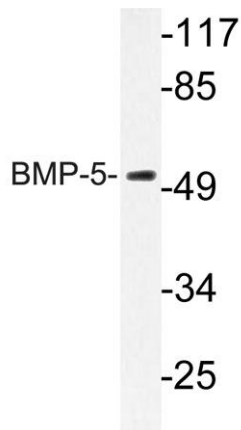
**Western Blot analysis of various cells using BMP-5 Polyclonal Antibody diluted at 1:1000**



**Western Blot analysis of HeLa cells using BMP-5 Polyclonal Antibody diluted at 1:1000**



**Immunohistochemistry analysis of BMP-5 antibody in paraffin-embedded human heart tissue.**



**Western blot analysis of lysate from HUVEC cells, using BMP-5 antibody.**