

BIG2 rabbit pAb**Cat#: orb764645 (Manual)**

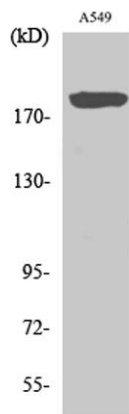
For research use only. Not intended for diagnostic use.

Product Name	BIG2 rabbit pAb
Host species	Rabbit
Applications	WB;IHC;IF;ELISA
Species Cross-Reactivity	Human;Mouse;Rat
Recommended dilutions	Western Blot: 1/500 - 1/2000. Immunohistochemistry: 1/100 - 1/300. Immunofluorescence: 1/200 - 1/1000. ELISA: 1/20000. Not yet tested in other applications.
Immunogen	The antiserum was produced against synthesized peptide derived from human ARFGEF2. AA range:1491-1540
Specificity	BIG2 Polyclonal Antibody detects endogenous levels of BIG2 protein.
Formulation	Liquid in PBS containing 50% glycerol, 0.5% BSA and 0.02% sodium azide..
Storage	Store at -20°C. Avoid repeated freeze-thaw cycles.
Protein Name	Brefeldin A-inhibited guanine nucleotide-exchange protein 2
Gene Name	ARFGEF2
Cellular localization	Cytoplasm. Membrane. Golgi apparatus. Cytoplasm, perinuclear region. Golgi apparatus, trans-Golgi network . Endosome . Cytoplasm, cytoskeleton, microtubule organizing center, centrosome. Cell projection, dendrite . Cytoplasmic vesicle . Cell junction, synapse . Cytoplasm, cytoskeleton . Translocates from cytoplasm to membranes upon cAMP treatment. Localized in recycling endosomes.

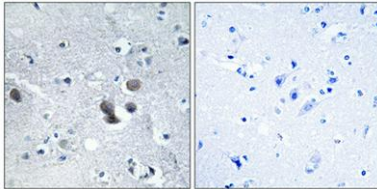
Purification	The antibody was affinity-purified from rabbit antiserum by affinity-chromatography using epitope-specific immunogen.
Clonality	Polyclonal
Concentration	1 mg/ml
Observed band	210kD
Human Gene ID	10564
Human Swiss-Prot Number	Q9Y6D5
Alternative Names	ARFGEF2; ARFGEP2; BIG2; Brefeldin A-inhibited guanine nucleotide-exchange protein 2; Brefeldin A-inhibited GEP 2; ADP-ribosylation factor guanine nucleotide-exchange factor 2

Background

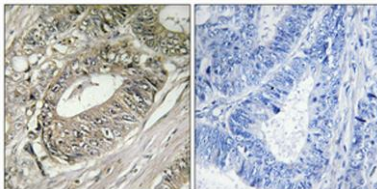
ADP-ribosylation factors (ARFs) play an important role in intracellular vesicular trafficking. The protein encoded by this gene is involved in the activation of ARFs by accelerating replacement of bound GDP with GTP and is involved in Golgi transport. It contains a Sec7 domain, which may be responsible for its guanine-nucleotide exchange activity and also brefeldin A inhibition. [provided by RefSeq, Jul 2008],



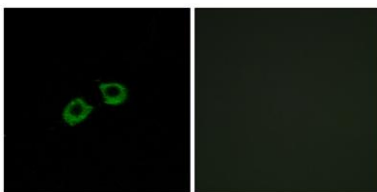
Western Blot analysis of various cells using BIG2 Polyclonal Antibody



Immunohistochemical analysis of paraffin-embedded Human brain. Antibody was diluted at 1:100(4° overnight). High-pressure and temperature Tris-EDTA,pH8.0 was used for antigen retrieval. Negative contrl (right) obtained from antibody was pre-absorbed by immunogen peptide.



Immunohistochemical analysis of paraffin-embedded Human colon cancer. Antibody was diluted at 1:100(4° overnight). High-pressure and temperature Tris-EDTA,pH8.0 was used for antigen retrieval. Negative contrl (right) obtained from antibody was pre-absorbed by immunogen peptide.



Immunofluorescence analysis of A549 cells, using ARFGEF2 Antibody. The picture on the right is blocked with the synthesized peptide.