

BCKDK rabbit pAb**Cat#: orb764631 (Manual)**

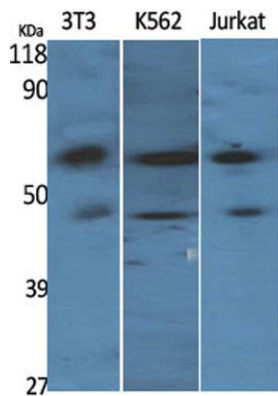
For research use only. Not intended for diagnostic use.

Product Name	BCKDK rabbit pAb
Host species	Rabbit
Applications	WB;IHC;IF;ELISA
Species Cross-Reactivity	Human;Mouse;Rat
Recommended dilutions	Western Blot: 1/500 - 1/2000. Immunohistochemistry: 1/100 - 1/300. Immunofluorescence: 1/200 - 1/1000. ELISA: 1/20000. Not yet tested in other applications.
Immunogen	The antiserum was produced against synthesized peptide derived from human BCKD . AA range:11-60
Specificity	BCKDK Polyclonal Antibody detects endogenous levels of BCKDK protein.
Formulation	Liquid in PBS containing 50% glycerol, 0.5% BSA and 0.02% sodium azide..
Storage	Store at -20°C. Avoid repeated freeze-thaw cycles.
Protein Name	[3-methyl-2-oxobutanoate dehydrogenase [lipoamide]] kinase mitochondrial
Gene Name	BCKDK
Cellular localization	Mitochondrion matrix. Mitochondrion .
Purification	The antibody was affinity-purified from rabbit antiserum by affinity-chromatography using epitope-specific immunogen.
Clonality	Polyclonal

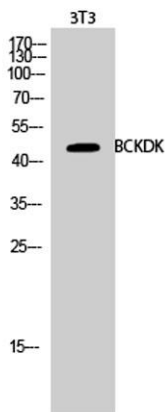
Concentration	1 mg/ml
Observed band	46kD
Human Gene ID	10295
Human Swiss-Prot Number	O14874
Alternative Names	BCKDK; [3-methyl-2-oxobutanoate dehydrogenase [lipoamide]] kinase; mitochondrial; Branched-chain alpha-ketoacid dehydrogenase kinase; BCKD-kinase; BCKDHKIN

Background

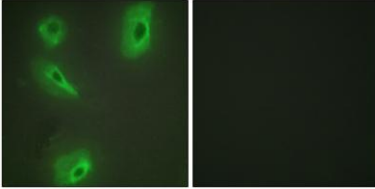
The branched-chain alpha-ketoacid dehydrogenase complex (BCKD) is an important regulator of the valine, leucine, and isoleucine catabolic pathways. The protein encoded by this gene is found in the mitochondrion, where it phosphorylates and inactivates BCKD. Several transcript variants encoding different isoforms have been found for this gene. [provided by RefSeq, Dec 2012],



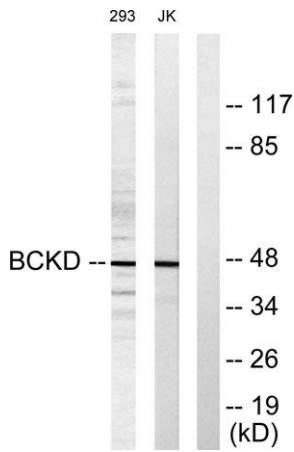
-BCKDK Western Blot analysis of various cells using BCKDK Polyclonal Antibody



Western Blot analysis of 3T3 cells using BCKDK Polyclonal Antibody



Immunofluorescence analysis of HeLa cells, using BCKD Antibody . The picture on the right is blocked with the synthesized peptide.



Western blot analysis of lysates from Jurkat and 293 cells, using BCKD Antibody . The lane on the right is blocked with the synthesized peptide.