

Aven rabbit pAb**Cat#: orb764611 (Manual)**

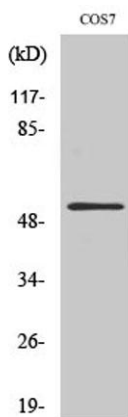
For research use only. Not intended for diagnostic use.

Product Name	Aven rabbit pAb
Host species	Rabbit
Applications	WB;IHC;IF;ELISA
Species Cross-Reactivity	Human;Monkey
Recommended dilutions	Western Blot: 1/500 - 1/2000. Immunohistochemistry: 1/100 - 1/300. Immunofluorescence: 1/200 - 1/1000. ELISA: 1/20000. Not yet tested in other applications.
Immunogen	The antiserum was produced against synthesized peptide derived from human AVEN. AA range:301-350
Specificity	Aven Polyclonal Antibody detects endogenous levels of Aven protein.
Formulation	Liquid in PBS containing 50% glycerol, 0.5% BSA and 0.02% sodium azide..
Storage	Store at -20°C. Avoid repeated freeze-thaw cycles.
Protein Name	Cell death regulator Aven
Gene Name	AVEN
Cellular localization	Endomembrane system; Peripheral membrane protein. Associated with intracellular membranes.
Purification	The antibody was affinity-purified from rabbit antiserum by affinity-chromatography using epitope-specific immunogen.
Clonality	Polyclonal

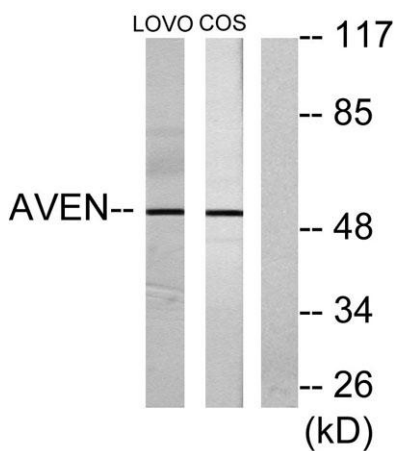
Concentration	1 mg/ml
Observed band	55kD
Human Gene ID	57099
Human Swiss-Prot Number	Q9NQS1
Alternative Names	AVEN; Cell death regulator Aven

Background

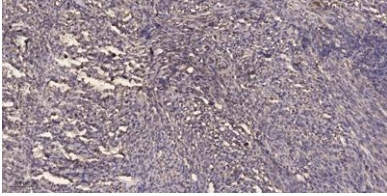
function:Protects against apoptosis mediated by Apaf-1.,subcellular location:Associated with intracellular membranes.,subunit:Binds Apaf-1, BCL-2 and BAD (Bcl-xl).,tissue specificity:Highly expressed in testis, ovary, thymus, prostate, spleen, small intestine, colon, heart, skeletal muscle, liver, kidney and pancreas.,



Western Blot analysis of various cells using Aven Polyclonal Antibody



Western blot analysis of lysates from COS7 and LOVO cells, using AVEN Antibody. The lane on the right is blocked with the synthesized peptide.



Immunohistochemical analysis of paraffin-embedded human Colon cancer. 1, Antibody was diluted at 1:200(4° overnight). 2, Tris-EDTA,pH9.0 was used for antigen retrieval. 3,Secondary antibody was diluted at 1:200(room temperature, 45min).