

ATP5A rabbit pAb**Cat#: orb764601 (Manual)**

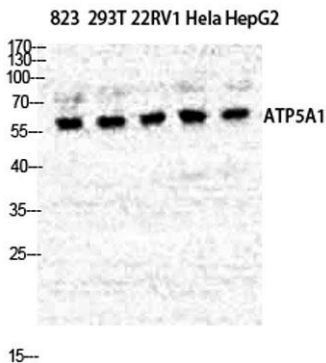
For research use only. Not intended for diagnostic use.

| | |
|---------------------------------|--|
| Product Name | ATP5A rabbit pAb |
| Host species | Rabbit |
| Applications | WB;IHC;IF;ELISA |
| Species Cross-Reactivity | Human;Mouse;Rat |
| Recommended dilutions | Western Blot: 1/500 - 1/2000. Immunohistochemistry: 1/100 - 1/300. ELISA: 1/40000. Not yet tested in other applications. |
| Immunogen | The antiserum was produced against synthesized peptide derived from human ATP5A1. AA range:201-250 |
| Specificity | ATP5A Polyclonal Antibody detects endogenous levels of ATP5A protein. |
| Formulation | Liquid in PBS containing 50% glycerol, 0.5% BSA and 0.02% sodium azide.. |
| Storage | Store at -20°C. Avoid repeated freeze-thaw cycles. |
| Protein Name | ATP synthase subunit alpha mitochondrial |
| Gene Name | ATP5A1 |
| Cellular localization | Mitochondrion . Mitochondrion inner membrane ; Peripheral membrane protein ; Matrix side . Cell membrane ; Peripheral membrane protein ; Extracellular side . Colocalizes with HRG on the cell surface of T-cells (PubMed:19285951). . |
| Purification | The antibody was affinity-purified from rabbit antiserum by affinity-chromatography using epitope-specific immunogen. |

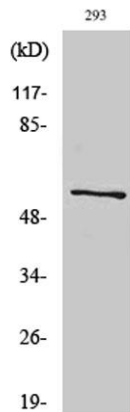
| | |
|--------------------------------|---|
| Clonality | Polyclonal |
| Concentration | 1 mg/ml |
| Observed band | 60kD |
| Human Gene ID | 498 |
| Human Swiss-Prot Number | P25705 |
| Alternative Names | ATP5A1; ATP5A; ATP5AL2; ATPM; ATP synthase subunit alpha; mitochondrial |

Background

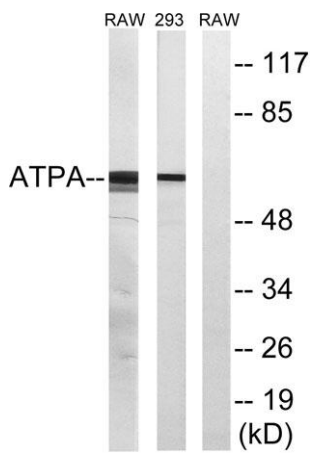
This gene encodes a subunit of mitochondrial ATP synthase. Mitochondrial ATP synthase catalyzes ATP synthesis, using an electrochemical gradient of protons across the inner membrane during oxidative phosphorylation. ATP synthase is composed of two linked multi-subunit complexes: the soluble catalytic core, F₁, and the membrane-spanning component, F₀, comprising the proton channel. The catalytic portion of mitochondrial ATP synthase consists of 5 different subunits (alpha, beta, gamma, delta, and epsilon) assembled with a stoichiometry of 3 alpha, 3 beta, and a single representative of the other 3. The proton channel consists of three main subunits (a, b, c). This gene encodes the alpha subunit of the catalytic core. Alternatively spliced transcript variants encoding the different isoforms have been identified. Pseudogenes of thi



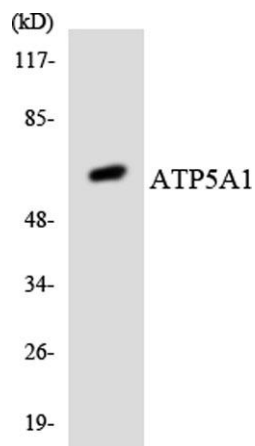
Western Blot analysis of various cells using ATP5A Polyclonal Antibody diluted at 1:500



Western Blot analysis of RAW264.7 cells using ATP5A Polyclonal Antibody diluted at 1:500



Western blot analysis of lysates from 293 and RAW264.7 cells, using ATP5A1 Antibody. The lane on the right is blocked with the synthesized peptide.



Western blot analysis of the lysates from HT-29 cells using ATP5A1 antibody.