

A-Raf rabbit pAb**Cat#: orb764568 (Manual)**

For research use only. Not intended for diagnostic use.

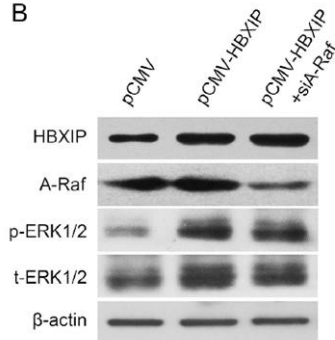
Product Name	A-Raf rabbit pAb
Host species	Rabbit
Applications	WB;IHC;IF;ELISA
Species Cross-Reactivity	Human;Mouse;Rat
Recommended dilutions	Western Blot: 1/500 - 1/2000. Immunohistochemistry: 1/100 - 1/300. ELISA: 1/20000. Not yet tested in other applications.
Immunogen	The antiserum was produced against synthesized peptide derived from human A-RAF. AA range:276-325
Specificity	A-Raf Polyclonal Antibody detects endogenous levels of A-Raf protein.
Formulation	Liquid in PBS containing 50% glycerol, 0.5% BSA and 0.02% sodium azide..
Storage	Store at -20°C. Avoid repeated freeze-thaw cycles.
Protein Name	Serine/threonine-protein kinase A-Raf
Gene Name	ARAF
Cellular localization	intracellular,mitochondrion,cytosol,
Purification	The antibody was affinity-purified from rabbit antiserum by affinity-chromatography using epitope-specific immunogen.
Clonality	Polyclonal

Concentration	1 mg/ml
Observed band	68kD
Human Gene ID	369
Human Swiss-Prot Number	P10398
Alternative Names	ARAF; ARAF1; PKS; PKS2; Serine/threonine-protein kinase A-Raf; Proto-oncogene A-Raf; Proto-oncogene A-Raf-1; Proto-oncogene Pks

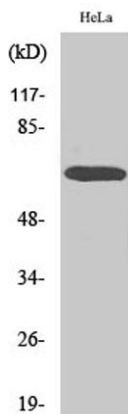
Background

This proto-oncogene belongs to the RAF subfamily of the Ser/Thr protein kinase family, and maybe involved in cell growth and development. Alternatively spliced transcript variants encoding different isoforms have been found for this gene.[provided by RefSeq, Jan 2012],

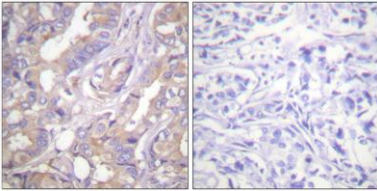
B



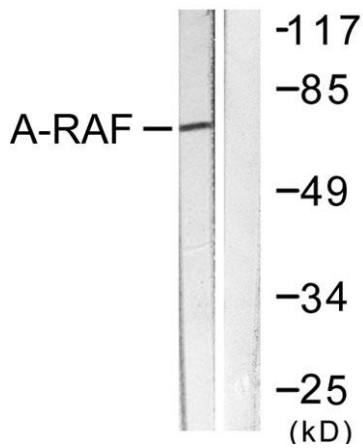
Western blot analysis in MCF-7 cells transfected with siA-Raf. Cancer Letters 355 (2014) 288–296



Western Blot analysis of various cells using A-Raf Polyclonal Antibody



Immunohistochemistry analysis of paraffin-embedded human breast carcinoma tissue, using A-RAF Antibody. The picture on the right is blocked with the synthesized peptide.



Western blot analysis of lysates from HeLa cells, treated with PMA 125ng/ml 30', using A-RAF Antibody. The lane on the right is blocked with the synthesized peptide.