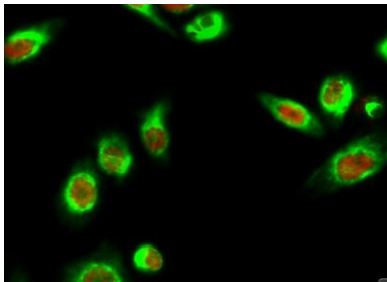


AQP2 rabbit pAb**Cat#: orb764563 (Manual)**

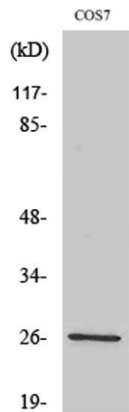
For research use only. Not intended for diagnostic use.

Product Name	AQP2 rabbit pAb
Host species	Rabbit
Applications	WB;IHC;IF;ELISA
Species Cross-Reactivity	Human;Mouse;Rat;Monkey;Dog
Recommended dilutions	Western Blot: 1/500 - 1/2000. Immunohistochemistry: 1/100 - 1/300. Immunofluorescence: 1/200 - 1/1000. ELISA: 1/10000. Not yet tested in other applications.
Immunogen	The antiserum was produced against synthesized peptide derived from human Aquaporin 2. AA range:222-271
Specificity	AQP2 Polyclonal Antibody detects endogenous levels of AQP2 protein.
Formulation	Liquid in PBS containing 50% glycerol, 0.5% BSA and 0.02% sodium azide..
Storage	Store at -20°C. Avoid repeated freeze-thaw cycles.
Protein Name	Aquaporin-2
Gene Name	AQP2
Cellular localization	Apical cell membrane ; Multi-pass membrane protein . Basolateral cell membrane ; Multi-pass membrane protein . Cell membrane ; Multi-pass membrane protein . Cytoplasmic vesicle membrane ; Multi-pass membrane protein . Golgi apparatus, trans-Golgi network membrane ; Multi-pass membrane protein . Shuttles from vesicles to the apical membrane (PubMed:15509592). Vasopressin-regulated phosphorylation is required for translocation to the apical cell membrane (PubMed:15509592). PLEKHA8/FAPP2 is required to transport AQP2 from the TGN to sites where AQP2 is phosphorylated (By similarity). .

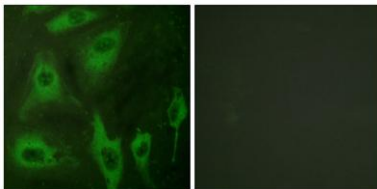
Purification	The antibody was affinity-purified from rabbit antiserum by affinity-chromatography using epitope-specific immunogen.
Clonality	Polyclonal
Concentration	1 mg/ml
Observed band	29kD
Human Gene ID	359
Human Swiss-Prot Number	P41181
Alternative Names	AQP2; Aquaporin-2; AQP-2; ADH water channel; Aquaporin-CD; AQP-CD; Collecting duct water channel protein; WCH-CD; Water channel protein for renal collecting duct
Background	This gene encodes a water channel protein located in the kidney collecting tubule. It belongs to the MIP/aquaporin family, some members of which are clustered together on chromosome 12q13. Mutations in this gene have been linked to autosomal dominant and recessive forms of nephrogenic diabetes insipidus. [provided by RefSeq, Oct 2008],



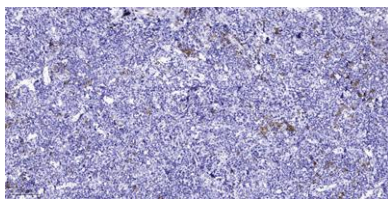
Immunofluorescence analysis of HeLa cell. 1, AQP2 Polyclonal Antibody (green) was diluted at 1:200 (4° overnight). (red) was diluted at 1:200 (4° overnight). 2, Goat Anti Rabbit Alexa Fluor 488 Catalog:RS3211 was diluted at 1:1000 (room temperature, 50min). Goat Anti Mouse Alexa Fluor 594 Catalog:RS3608 was diluted at 1:1000 (room temperature, 50min).



Western Blot analysis of various cells using AQP2 Polyclonal Antibody



Immunofluorescence analysis of HeLa cells, using Aquaporin 2 Antibody. The picture on the right is blocked with the synthesized peptide.



Immunohistochemical analysis of paraffin-embedded human tonsil. 1, Antibody was diluted at 1:200(4° overnight). 2, Tris-EDTA,pH9.0 was used for antigen retrieval. 3,Secondary antibody was diluted at 1:200(room temperature, 45min).