

APBA2BP rabbit pAb**Cat#: orb764548 (Manual)**

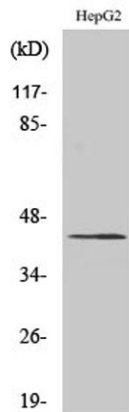
For research use only. Not intended for diagnostic use.

Product Name	APBA2BP rabbit pAb
Host species	Rabbit
Applications	WB;IHC;IF;ELISA
Species Cross-Reactivity	Human;Mouse
Recommended dilutions	Western Blot: 1/500 - 1/2000. Immunohistochemistry: 1/100 - 1/300. Immunofluorescence: 1/200 - 1/1000. ELISA: 1/40000. Not yet tested in other applications.
Immunogen	The antiserum was produced against synthesized peptide derived from human NECAB3. AA range:321-370
Specificity	APBA2BP Polyclonal Antibody detects endogenous levels of APBA2BP protein.
Formulation	Liquid in PBS containing 50% glycerol, 0.5% BSA and 0.02% sodium azide..
Storage	Store at -20°C. Avoid repeated freeze-thaw cycles.
Protein Name	N-terminal EF-hand calcium-binding protein 3
Gene Name	NECAB3
Cellular localization	Golgi apparatus .
Purification	The antibody was affinity-purified from rabbit antiserum by affinity-chromatography using epitope-specific immunogen.
Clonality	Polyclonal

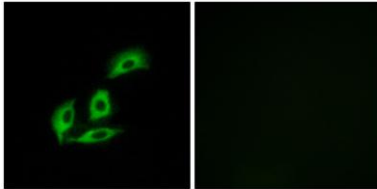
Concentration	1 mg/ml
Observed band	44kD
Human Gene ID	63941
Human Swiss-Prot Number	Q96P71
Alternative Names	NECAB3; APBA2BP; NIP1; SYTIP2; XB51; N-terminal EF-hand calcium-binding protein 3; Amyloid beta A4 protein-binding family A member 2-binding protein; Nek2-interacting protein 1; Neuronal calcium-binding protein 3; X11L-binding protein 51

Background

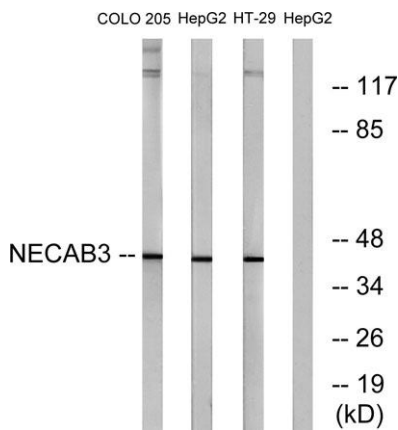
The protein encoded by this gene interacts with the amino-terminal domain of the neuron-specific X11-like protein (X11L), inhibits the association of X11L with amyloid precursor protein through a non-competitive mechanism, and abolishes the suppression of beta-amyloid production by X11L. This protein, together with X11L, may play an important role in the regulatory system of amyloid precursor protein metabolism and beta-amyloid generation. The protein is phosphorylated by NIMA-related expressed kinase 2, and localizes to the Golgi apparatus. Multiple transcript variants encoding different isoforms have been found for this gene. [provided by RefSeq, Jul 2008],



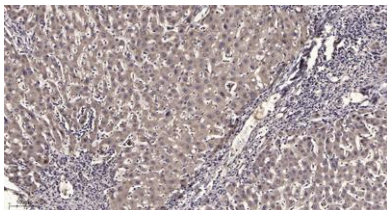
Western Blot analysis of various cells using APBA2BP Polyclonal Antibody



Immunofluorescence analysis of A549 cells, using NECAB3 Antibody. The picture on the right is blocked with the synthesized peptide.



Western blot analysis of lysates from HepG2, COLO, and HT-29 cells, using NECAB3 Antibody. The lane on the right is blocked with the synthesized peptide.



Immunohistochemical analysis of paraffin-embedded human liver cancer. 1, Antibody was diluted at 1:200(4° overnight). 2, Tris-EDTA,pH9.0 was used for antigen retrieval. 3,Secondary antibody was diluted at 1:200(room temperature, 45min).