

AOX1 rabbit pAb**Cat#: orb764537 (Manual)**

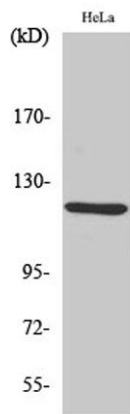
For research use only. Not intended for diagnostic use.

Product Name	AOX1 rabbit pAb
Host species	Rabbit
Applications	WB;IHC;IF;ELISA
Species Cross-Reactivity	Human;Rat
Recommended dilutions	Western Blot: 1/500 - 1/2000. Immunohistochemistry: 1/100 - 1/300. ELISA: 1/40000. Not yet tested in other applications.
Immunogen	The antiserum was produced against synthesized peptide derived from human AOX1. AA range:521-570
Specificity	AOX1 Polyclonal Antibody detects endogenous levels of AOX1 protein.
Formulation	Liquid in PBS containing 50% glycerol, 0.5% BSA and 0.02% sodium azide..
Storage	Store at -20°C. Avoid repeated freeze-thaw cycles.
Protein Name	Aldehyde oxidase
Gene Name	AOX1
Cellular localization	Cytoplasm .
Purification	The antibody was affinity-purified from rabbit antiserum by affinity-chromatography using epitope-specific immunogen.
Clonality	Polyclonal

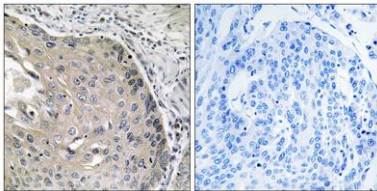
Concentration	1 mg/ml
Observed band	120kD
Human Gene ID	316
Human Swiss-Prot Number	Q06278
Alternative Names	AOX1; AO; Aldehyde oxidase

Background

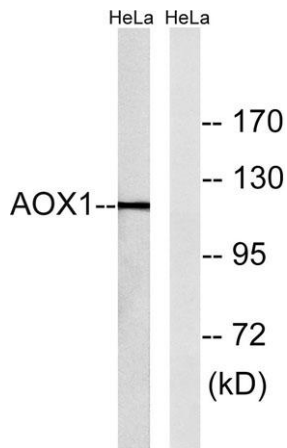
Aldehyde oxidase produces hydrogen peroxide and, under certain conditions, can catalyze the formation of superoxide. Aldehyde oxidase is a candidate gene for amyotrophic lateral sclerosis. [provided by RefSeq, Jul 2008],



Western Blot analysis of various cells using AOX1 Polyclonal Antibody diluted at 1:2000



Immunohistochemistry analysis of paraffin-embedded human lung carcinoma tissue, using AOX1 Antibody. The picture on the right is blocked with the synthesized peptide.



Western blot analysis of lysates from HeLa cells, using AOX1 Antibody. The lane on the right is blocked with the synthesized peptide.