

## Amphiphysin I rabbit pAb

**Cat#: orb764522 (Manual)**

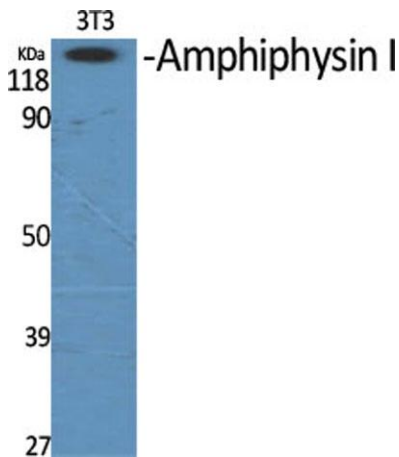
For research use only. Not intended for diagnostic use.

<b>Product Name</b>	Amphiphysin I rabbit pAb
<b>Host species</b>	Rabbit
<b>Applications</b>	WB;ELISA
<b>Species Cross-Reactivity</b>	Human;Mouse;Rat
<b>Recommended dilutions</b>	Western Blot: 1/500 - 1/2000. ELISA: 1/20000. Not yet tested in other applications.
<b>Immunogen</b>	The antiserum was produced against synthesized peptide derived from human AMPH. AA range:131-180
<b>Specificity</b>	Amphiphysin I Polyclonal Antibody detects endogenous levels of Amphiphysin I protein.
<b>Formulation</b>	Liquid in PBS containing 50% glycerol, 0.5% BSA and 0.02% sodium azide..
<b>Storage</b>	Store at -20°C. Avoid repeated freeze-thaw cycles.
<b>Protein Name</b>	Amphiphysin
<b>Gene Name</b>	AMPH
<b>Cellular localization</b>	Cytoplasmic vesicle, secretory vesicle, synaptic vesicle membrane; Peripheral membrane protein; Cytoplasmic side. Cytoplasm, cytoskeleton.
<b>Purification</b>	The antibody was affinity-purified from rabbit antiserum by affinity-chromatography using epitope-specific immunogen.
<b>Clonality</b>	Polyclonal

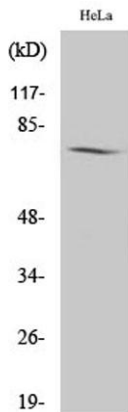
<b>Concentration</b>	1 mg/ml
<b>Observed band</b>	76kD
<b>Human Gene ID</b>	273
<b>Human Swiss-Prot Number</b>	P49418
<b>Alternative Names</b>	AMPH; AMPH1; Amphiphysin

## Background

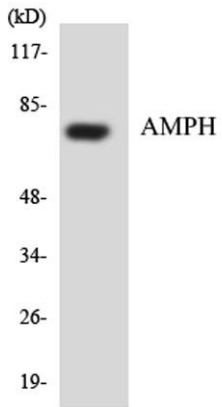
This gene encodes a protein associated with the cytoplasmic surface of synaptic vesicles. A subset of patients with stiff-man syndrome who were also affected by breast cancer are positive for autoantibodies against this protein. Alternate splicing of this gene results in two transcript variants encoding different isoforms. Additional splice variants have been described, but their full length sequences have not been determined. A pseudogene of this gene is found on chromosome 11.[provided by RefSeq, Nov 2010],



Western Blot analysis of various cells using Amphiphysin I Polyclonal Antibody



Western Blot analysis of HeLa cells using Amphiphysin I Polyclonal Antibody



**Western blot analysis of the lysates from HUVEC cells using AMPH antibody.**