

Aldolase B rabbit pAb**Cat#: orb764515 (Manual)**

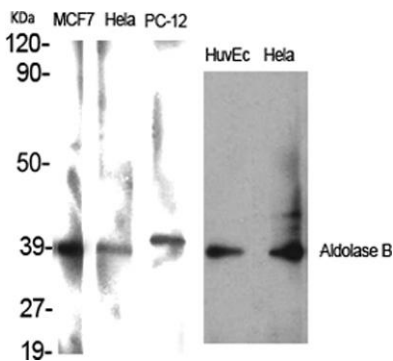
For research use only. Not intended for diagnostic use.

Product Name	Aldolase B rabbit pAb
Host species	Rabbit
Applications	WB;IHC;IF;ELISA
Species Cross-Reactivity	Human;Mouse;Rat
Recommended dilutions	Western Blot: 1/500 - 1/2000. Immunohistochemistry: 1/100 - 1/300. ELISA: 1/20000. Not yet tested in other applications.
Immunogen	The antiserum was produced against synthesized peptide derived from human ALDOB. AA range:111-160
Specificity	Aldolase B Polyclonal Antibody detects endogenous levels of Aldolase B protein.
Formulation	Liquid in PBS containing 50% glycerol, 0.5% BSA and 0.02% sodium azide..
Storage	Store at -20°C. Avoid repeated freeze-thaw cycles.
Protein Name	Fructose-bisphosphate aldolase B
Gene Name	ALDOB
Cellular localization	Cytoplasm, cytoskeleton, microtubule organizing center, centrosome, centriolar satellite .
Purification	The antibody was affinity-purified from rabbit antiserum by affinity-chromatography using epitope-specific immunogen.
Clonality	Polyclonal

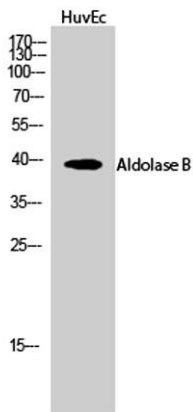
Concentration	1 mg/ml
Observed band	39kD
Human Gene ID	229
Human Swiss-Prot Number	P05062
Alternative Names	ALDOB; ALDB; Fructose-bisphosphate aldolase B; Liver-type aldolase

Background

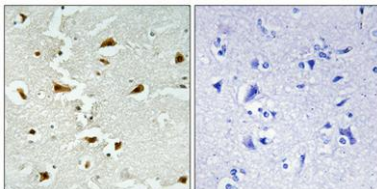
Fructose-1,6-bisphosphate aldolase (EC 4.1.2.13) is a tetrameric glycolytic enzyme that catalyzes the reversible conversion of fructose-1,6-bisphosphate to glyceraldehyde 3-phosphate and dihydroxyacetone phosphate. Vertebrates have 3 aldolase isozymes which are distinguished by their electrophoretic and catalytic properties. Differences indicate that aldolases A, B, and C are distinct proteins, the products of a family of related 'housekeeping' genes exhibiting developmentally regulated expression of the different isozymes. The developing embryo produces aldolase A, which is produced in even greater amounts in adult muscle where it can be as much as 5% of total cellular protein. In adult liver, kidney and intestine, aldolase A expression is repressed and aldolase B is produced. In brain and other nervous tissue, aldolase A and C are expressed about equally. There is a high



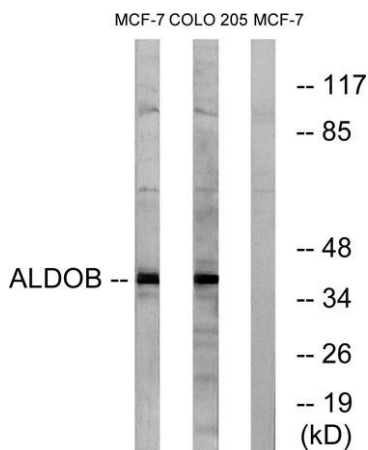
Western Blot analysis of various cells using Aldolase B Polyclonal Antibody



Western Blot analysis of HuvEc cells using Aldolase B Polyclonal Antibody



Immunohistochemical analysis of paraffin-embedded Human brain. Antibody was diluted at 1:100(4° overnight). High-pressure and temperature Tris-EDTA,pH8.0 was used for antigen retrieval. Negative contrl (right) obtained from antibody was pre-absorbed by immunogen peptide.



Western blot analysis of lysates from MCF-7 and HUVEC cells, using ALDOB Antibody. The lane on the right is blocked with the synthesized peptide.