

**AK6 rabbit pAb****Cat#: orb764495 (Manual)**

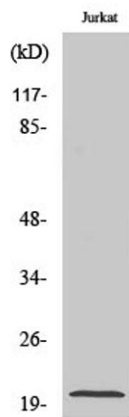
For research use only. Not intended for diagnostic use.

<b>Product Name</b>	AK6 rabbit pAb
<b>Host species</b>	Rabbit
<b>Applications</b>	WB;IHC;IF;ELISA
<b>Species Cross-Reactivity</b>	Human;Mouse;Rat
<b>Recommended dilutions</b>	Western Blot: 1/500 - 1/2000. Immunohistochemistry: 1/100 - 1/300. Immunofluorescence: 1/200 - 1/1000. ELISA: 1/20000. Not yet tested in other applications.
<b>Immunogen</b>	The antiserum was produced against synthesized peptide derived from human KAD6. AA range:11-60
<b>Specificity</b>	AK6 Polyclonal Antibody detects endogenous levels of AK6 protein.
<b>Formulation</b>	Liquid in PBS containing 50% glycerol, 0.5% BSA and 0.02% sodium azide..
<b>Storage</b>	Store at -20°C. Avoid repeated freeze-thaw cycles.
<b>Protein Name</b>	Adenylate kinase isoenzyme 6
<b>Gene Name</b>	
<b>Cellular localization</b>	Nucleus, nucleoplasm. Nucleus, Cajal body. Displays widespread diffuse nucleoplasmic distribution but not detected in nucleoli. Detected in Cajal bodies but not in all cells.
<b>Purification</b>	The antibody was affinity-purified from rabbit antiserum by affinity-chromatography using epitope-specific immunogen.

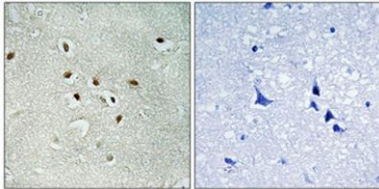
<b>Clonality</b>	Polyclonal
<b>Concentration</b>	1 mg/ml
<b>Observed band</b>	20kD
<b>Human Gene ID</b>	6880
<b>Human Swiss-Prot Number</b>	Q9Y3D8
<b>Alternative Names</b>	TAF9; AK6; CINAP; AD-004; CGI-137; Adenylate kinase isoenzyme 6; ATP-AMP transphosphorylase 6; Coilin-interacting nuclear ATPase protein; hCINAP

**Background**

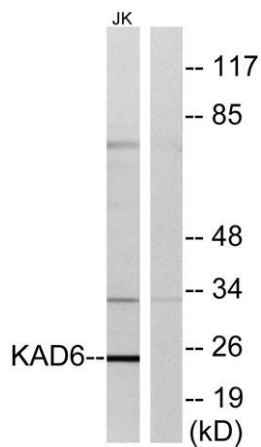
adenylate kinase 6(AK6) Homo sapiens This gene encodes a protein that belongs to the adenylate kinase family of enzymes. The protein has a nuclear localization and contains Walker A (P-loop) and Walker B motifs and a metal-coordinating residue. The protein may be involved in regulation of Cajal body formation. In human, AK6 and TAF9 (GeneID: 6880) are two distinct genes that share 5' exons. Alternative splicing results in multiple transcript variants. [provided by RefSeq, Sep 2013],



**Western Blot analysis of various cells using AK6 Polyclonal Antibody**



**Immunohistochemical analysis of paraffin-embedded Human brain. Antibody was diluted at 1:100(4° overnight). High-pressure and temperature Tris-EDTA,pH8.0 was used for antigen retrieval. Negative contrl (right) obtained from antibody was pre-absorbed by i**



**Western blot analysis of lysates from Jurkat cells, using KAD6 Antibody. The lane on the right is blocked with the synthesized peptide.**