

**AIM2 rabbit pAb****Cat#: orb764492 (Manual)**

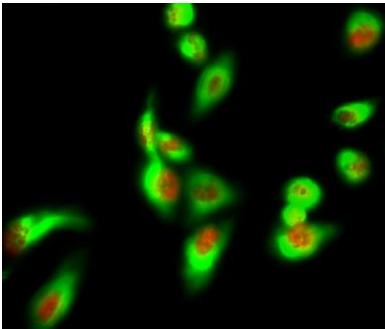
For research use only. Not intended for diagnostic use.

<b>Product Name</b>	AIM2 rabbit pAb
<b>Host species</b>	Rabbit
<b>Applications</b>	WB;IHC;IF;ELISA
<b>Species Cross-Reactivity</b>	Human; Mouse;Rat
<b>Recommended dilutions</b>	Western Blot: 1/500 - 1/2000. Immunohistochemistry: 1/100 - 1/300. Immunofluorescence: 1/200 - 1/1000. ELISA: 1/40000. Not yet tested in other applications.
<b>Immunogen</b>	The antiserum was produced against synthesized peptide derived from human AIM2. AA range:51-100
<b>Specificity</b>	AIM2 Polyclonal Antibody detects endogenous levels of AIM2 protein.
<b>Formulation</b>	Liquid in PBS containing 50% glycerol, 0.5% BSA and 0.02% sodium azide..
<b>Storage</b>	Store at -20°C. Avoid repeated freeze-thaw cycles.
<b>Protein Name</b>	Interferon-inducible protein AIM2
<b>Gene Name</b>	AIM2
<b>Cellular localization</b>	Nucleus. Cytoplasm. Activated inflammasomes can aggregate in the cytosol as speck-like particles.
<b>Purification</b>	The antibody was affinity-purified from rabbit antiserum by affinity-chromatography using epitope-specific immunogen.
<b>Clonality</b>	Polyclonal

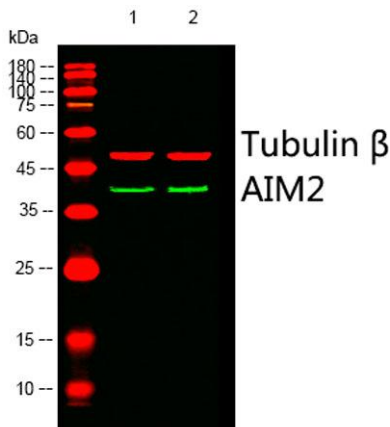
<b>Concentration</b>	1 mg/ml
<b>Observed band</b>	39kD
<b>Human Gene ID</b>	9447
<b>Human Swiss-Prot Number</b>	O14862
<b>Alternative Names</b>	AIM2; Interferon-inducible protein AIM2; Absent in melanoma 2

## Background

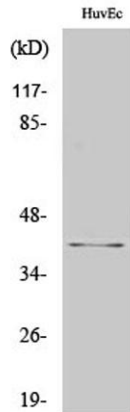
AIM2 is a member of the IFI202X /IFI16 family. It plays a putative role in tumorigenic reversion and may control cell proliferation. Interferon-gamma induces expression of AIM2. [provided by RefSeq, Jul 2008],



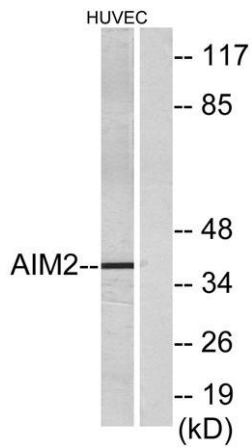
**Immunofluorescence analysis of HeLa cell.** 1, AIM2 Polyclonal Antibody (red) was diluted at 1:200 (4° overnight). HSP70 Monoclonal Antibody (3G10) (green) was diluted at 1:200 (4° overnight). 2, Goat Anti Rabbit Alexa Fluor 594 Catalog:RS3611 was diluted at 1:1000 (room temperature, 50min). Goat Anti Mouse Alexa Fluor 488 Catalog:RS3208 was diluted at 1:1000 (room temperature, 50min).



**Western blot analysis of lysates from 1) HuvEc, 2) Jurkat cells.** (Green) primary antibody was diluted at 1:1000, 4° over night, Dylight 800 secondary antibody (Immunoway:RS23920) was diluted at 1:10000, 37° 1hour. (Red) Tubulin beta Monoclonal Antibody (5G3) (Immunoway:YM3030) antibody was diluted at 1:5000 as loading control, 4° over night, Dylight 680 secondary antibody (Immunoway:RS23710) was diluted at 1:10000, 37° 1hour.



**Western Blot analysis of HuvEc cells using AIM2 Polyclonal Antibody cells nucleus extracted by Minute™ Cytoplasmic and Nuclear Fractionation kit (SC-003, Inventibiotech, MN, USA).**



**Western blot analysis of lysates from HUVEC cells, using AIM2 Antibody. The lane on the right is blocked with the synthesized peptide.**