

ADAR2 rabbit pAb**Cat#: orb764475 (Manual)**

For research use only. Not intended for diagnostic use.

Product Name	ADAR2 rabbit pAb
Host species	Rabbit
Applications	WB;IHC;IF;ELISA
Species Cross-Reactivity	Human;Mouse;Rat
Recommended dilutions	Western Blot: 1/500 - 1/2000. Immunohistochemistry: 1/100 - 1/300. ELISA: 1/20000. Not yet tested in other applications.
Immunogen	The antiserum was produced against synthesized peptide derived from human ADARB1. AA range:481-530
Specificity	ADAR2 Polyclonal Antibody detects endogenous levels of ADAR2 protein.
Formulation	Liquid in PBS containing 50% glycerol, 0.5% BSA and 0.02% sodium azide..
Storage	Store at -20°C. Avoid repeated freeze-thaw cycles.
Protein Name	Double-stranded RNA-specific editase 1
Gene Name	ADARB1
Cellular localization	Nucleus . Nucleus, nucleolus . Shuttles between nucleoli and the nucleoplasm. .; [Isoform 1]: Nucleus . Nucleus, nucleolus .; [Isoform 2]: Nucleus . Nucleus, nucleolus .
Purification	The antibody was affinity-purified from rabbit antiserum by affinity-chromatography using epitope-specific immunogen.

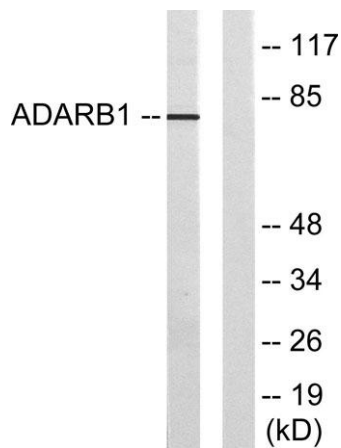
Clonality	Polyclonal
Concentration	1 mg/ml
Observed band	80kD
Human Gene ID	104
Human Swiss-Prot Number	P78563
Alternative Names	ADARB1; ADAR2; DRADA2; RED1; Double-stranded RNA-specific editase 1; RNA-editing deaminase 1; RNA-editing enzyme 1; dsRNA adenosine deaminase

Background

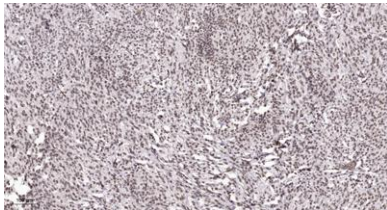
This gene encodes the enzyme responsible for pre-mRNA editing of the glutamate receptor subunit B by site-specific deamination of adenosines. Studies in rat found that this enzyme acted on its own pre-mRNA molecules to convert an AA dinucleotide to an AI dinucleotide which resulted in a new splice site. Alternative splicing of this gene results in several transcript variants, some of which have been characterized by the presence or absence of an ALU cassette insert and a short or long C-terminal region. [provided by RefSeq, Jul 2008],



Western Blot analysis of various cells using ADAR2 Polyclonal Antibody cells nucleus extracted by Minute TM Cytoplasmic and Nuclear Fractionation kit (SC-003, Invent biotech, MN, USA).



Western blot analysis of lysates from HepG2 cells, using ADARB1 Antibody. The lane on the right is blocked with the synthesized peptide.



Immunohistochemical analysis of paraffin-embedded human Small intestinal stromal tumor. 1, Tris-EDTA, pH9.0 was used for antigen retrieval. 2 Antibody was diluted at 1:200 (4° overnight). 3, Secondary antibody was diluted at 1:200 (room temperature, 45min).