

AChR α 5 rabbit pAb**Cat#: orb764458 (Manual)**

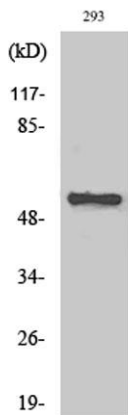
For research use only. Not intended for diagnostic use.

Product Name	AChR α 5 rabbit pAb
Host species	Rabbit
Applications	WB;ELISA
Species Cross-Reactivity	Human;Mouse;Rat;Monkey
Recommended dilutions	Western Blot: 1/500 - 1/2000. ELISA: 1/10000. Not yet tested in other applications.
Immunogen	The antiserum was produced against synthesized peptide derived from human AChR α 5. AA range:166-215
Specificity	AChR α 5 Polyclonal Antibody detects endogenous levels of AChR α 5 protein.
Formulation	Liquid in PBS containing 50% glycerol, 0.5% BSA and 0.02% sodium azide..
Storage	Store at -20°C. Avoid repeated freeze-thaw cycles.
Protein Name	Neuronal acetylcholine receptor subunit alpha-5
Gene Name	CHRNA5
Cellular localization	Cell junction, synapse, postsynaptic cell membrane; Multi-pass membrane protein. Cell membrane; Multi-pass membrane protein.
Purification	The antibody was affinity-purified from rabbit antiserum by affinity-chromatography using epitope-specific immunogen.
Clonality	Polyclonal

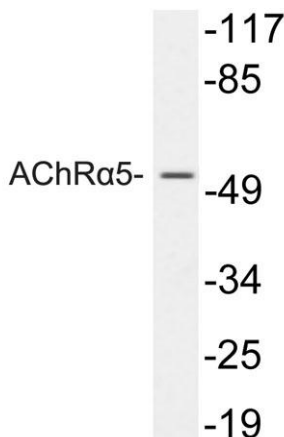
Concentration	1 mg/ml
Observed band	53kD
Human Gene ID	1138
Human Swiss-Prot Number	P30532
Alternative Names	CHRNA5; NACHRA5; Neuronal acetylcholine receptor subunit alpha-5

Background

The protein encoded by this gene is a nicotinic acetylcholine receptor subunit and a member of a superfamily of ligand-gated ion channels that mediate fast signal transmission at synapses. These receptors are thought to be heteropentamers composed of separate but similar subunits. Defects in this gene have been linked to susceptibility to lung cancer type 2 (LNCR2).[provided by RefSeq, Jun 2010],



Western Blot analysis of various cells using AChR α 5 Polyclonal Antibody



Western blot analysis of lysates from 293 cells, using AChR α 5 antibody.