

ABCC13 rabbit pAb**Cat#: orb764441 (Manual)**

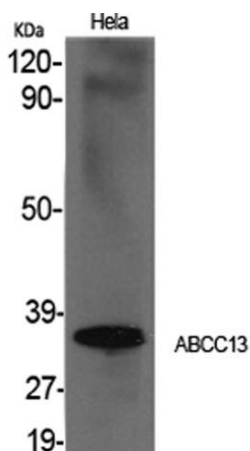
For research use only. Not intended for diagnostic use.

Product Name	ABCC13 rabbit pAb
Host species	Rabbit
Applications	WB;IHC;IF;ELISA
Species Cross-Reactivity	Human;Rat;Mouse;
Recommended dilutions	Western Blot: 1/500 - 1/2000. Immunohistochemistry: 1/100 - 1/300. ELISA: 1/40000. Not yet tested in other applications.
Immunogen	The antiserum was produced against synthesized peptide derived from human ABCC13. AA range:56-105
Specificity	ABCC13 Polyclonal Antibody detects endogenous levels of ABCC13 protein.
Formulation	Liquid in PBS containing 50% glycerol, 0.5% BSA and 0.02% sodium azide..
Storage	Store at -20°C. Avoid repeated freeze-thaw cycles.
Protein Name	Putative ATP-binding cassette sub-family C member 13
Gene Name	ABCC13
Cellular localization	integral component of membrane,
Purification	The antibody was affinity-purified from rabbit antiserum by affinity-chromatography using epitope-specific immunogen.
Clonality	Polyclonal

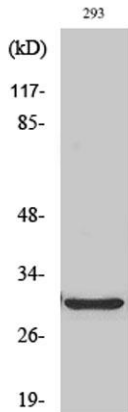
Concentration	1 mg/ml
Observed band	31kD
Human Gene ID	150000
Human Swiss-Prot Number	Q9NSE7
Alternative Names	ABCC13; C21orf73; PRED6; Putative ATP-binding cassette sub-family C member 13

Background

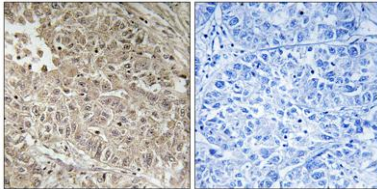
ATP binding cassette subfamily C member 13 (pseudogene)(ABCC13) Homo sapiens This gene is a member of the superfamily of genes encoding ATP-binding cassette (ABC) transporters. ABC proteins transport various molecules across extra- and intra-cellular membranes. ABC genes are divided into seven distinct subfamilies (ABC1, MDR/TAP, MRP, ALD, OABP, GCN20, and White). This family member is part of the MRP subfamily, which is involved in multi-drug resistance, but the human locus is now thought to be a pseudogene incapable of encoding a functional ABC protein. Alternative splicing results in multiple transcript variants; however, not all variants have been fully described. [provided by RefSeq, Jul 2008],



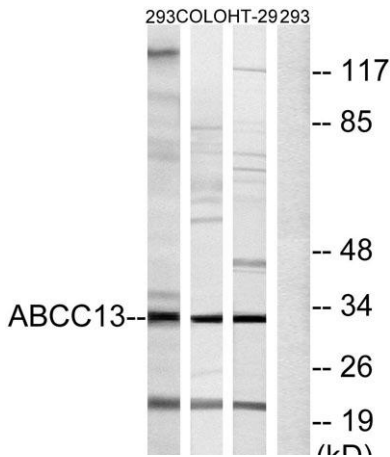
Western Blot analysis of various cells using ABCC13 Polyclonal Antibody cells nucleus extracted by Minute TM Cytoplasmic and Nuclear Fractionation kit (SC-003, Inventbiotech, MN, USA).



Western Blot analysis of HT29 cells using ABCC13 Polyclonal Antibody cells nucleus extracted by Minute™ Cytoplasmic and Nuclear Fractionation kit (SC-003, Inventibiotech, MN, USA).



Immunohistochemistry analysis of paraffin-embedded human liver carcinoma tissue, using ABCC13 Antibody. The picture on the right is blocked with the synthesized peptide.



Western blot analysis of lysates from 293, COLO, and HT-29 cells, using ABCC13 Antibody. The lane on the right is blocked with the synthesized peptide.