

A20 rabbit pAb**Cat#: orb764431 (Manual)**

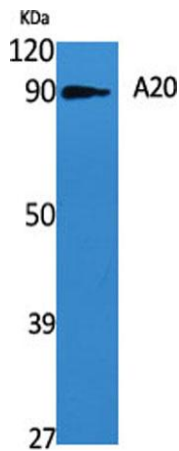
For research use only. Not intended for diagnostic use.

Product Name	A20 rabbit pAb
Host species	Rabbit
Applications	WB;IF;ELISA
Species Cross-Reactivity	Human;Mouse
Recommended dilutions	Western Blot: 1/500 - 1/2000. Immunofluorescence: 1/200 - 1/1000. ELISA: 1/20000. Not yet tested in other applications.
Immunogen	The antiserum was produced against synthesized peptide derived from human TNAP3. AA range:321-370
Specificity	A20 Polyclonal Antibody detects endogenous levels of A20 protein.
Formulation	Liquid in PBS containing 50% glycerol, 0.5% BSA and 0.02% sodium azide..
Storage	Store at -20°C. Avoid repeated freeze-thaw cycles.
Protein Name	Tumor necrosis factor alpha-induced protein 3
Gene Name	TNFAIP3
Cellular localization	Cytoplasm. Nucleus. Lysosome.; [A20p50]: Cytoplasm.
Purification	The antibody was affinity-purified from rabbit antiserum by affinity-chromatography using epitope-specific immunogen.
Clonality	Polyclonal

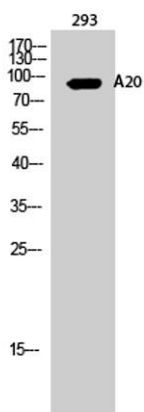
Concentration	1 mg/ml
Observed band	89kD
Human Gene ID	7128
Human Swiss-Prot Number	P21580
Alternative Names	TNFAIP3; OTUD7C; Tumor necrosis factor alpha-induced protein 3; TNF alpha-induced protein 3; OTU domain-containing protein 7C; Putative DNA-binding protein A20; Zinc finger protein A20

Background

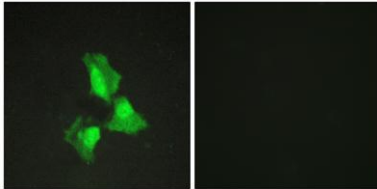
This gene was identified as a gene whose expression is rapidly induced by the tumor necrosis factor (TNF). The protein encoded by this gene is a zinc finger protein and ubiquitin-editing enzyme, and has been shown to inhibit NF-kappa B activation as well as TNF-mediated apoptosis. The encoded protein, which has both ubiquitin ligase and deubiquitinase activities, is involved in the cytokine-mediated immune and inflammatory responses. Several transcript variants encoding the same protein have been found for this gene. [provided by RefSeq, Jul 2012],



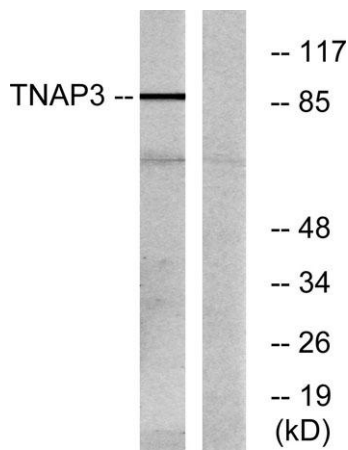
Western Blot analysis of various cells using A20 Polyclonal Antibody



Western Blot analysis of 293 cells using A20 Polyclonal Antibody



Immunofluorescence analysis of HepG2 cells, using TNAP3 Antibody. The picture on the right is blocked with the synthesized peptide.



Western blot analysis of lysates from RAW264.7 cells, using TNAP3 Antibody. The lane on the right is blocked with the synthesized peptide.