

## A Cyclase I rabbit pAb

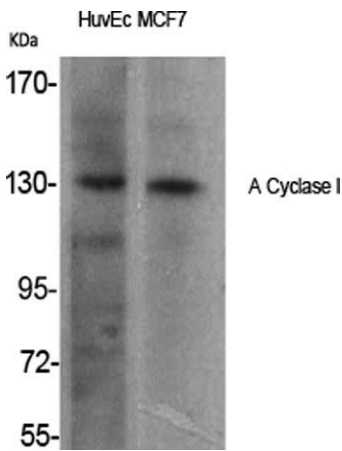
**Cat#: orb764429 (Manual)**

For research use only. Not intended for diagnostic use.

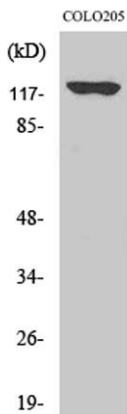
<b>Product Name</b>	A Cyclase I rabbit pAb
<b>Host species</b>	Rabbit
<b>Applications</b>	WB;IHC;IF;ELISA
<b>Species Cross-Reactivity</b>	Human;Mouse
<b>Recommended dilutions</b>	Western Blot: 1/500 - 1/2000. Immunohistochemistry: 1/100 - 1/300. ELISA: 1/40000. Not yet tested in other applications.
<b>Immunogen</b>	The antiserum was produced against synthesized peptide derived from human ADCY1. AA range:231-280
<b>Specificity</b>	A Cyclase I Polyclonal Antibody detects endogenous levels of A Cyclase I protein.
<b>Formulation</b>	Liquid in PBS containing 50% glycerol, 0.5% BSA and 0.02% sodium azide..
<b>Storage</b>	Store at -20°C. Avoid repeated freeze-thaw cycles.
<b>Protein Name</b>	Adenylate cyclase type 1
<b>Gene Name</b>	ADCY1
<b>Cellular localization</b>	Membrane ; Multi-pass membrane protein . Cell membrane ; Multi-pass membrane protein . Cytoplasm . Membrane raft . Expressed in the cytoplasm of supporting cells and hair cells of the cochlea vestibule, as well as to the cochlear hair cell nuclei and stereocilia. .
<b>Purification</b>	The antibody was affinity-purified from rabbit antiserum by affinity-chromatography using epitope-specific immunogen.

<b>Clonality</b>	Polyclonal
<b>Concentration</b>	1 mg/ml
<b>Observed band</b>	130kD
<b>Human Gene ID</b>	107
<b>Human Swiss-Prot Number</b>	Q08828
<b>Alternative Names</b>	ADCY1; Adenylate cyclase type 1; ATP pyrophosphate-lyase 1; Adenylate cyclase type I; Adenylyl cyclase 1; Ca(2+)/calmodulin-activated adenylyl cyclase

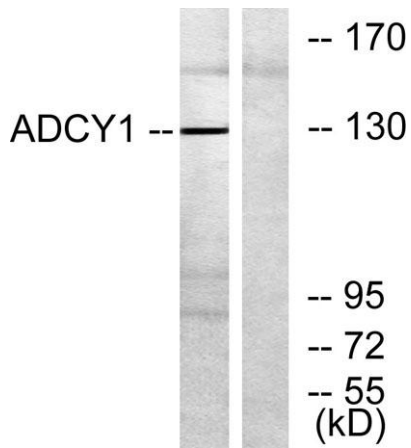
**Background** This gene encodes a member of the of adenylate cyclase gene family that is primarily expressed in the brain. This protein is regulated by calcium/calmodulin concentration and may be involved in brain development. Alternate splicing results in multiple transcript variants. [provided by RefSeq, Aug 2013].



Western Blot analysis of various cells using A Cyclase I Polyclonal Antibody



Western Blot analysis of COLO205 cells using A Cyclase I Polyclonal Antibody



**Western blot analysis of lysates from COLO205 cells, using ADCY1 Antibody. The lane on the right is blocked with the synthesized peptide.**