

**14-3-3  $\theta$  rabbit pAb****Cat#: orb764419 (Manual)**

For research use only. Not intended for diagnostic use.

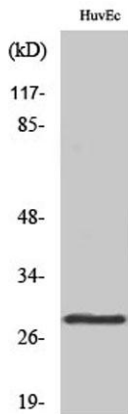
<b>Product Name</b>	14-3-3 $\theta$ rabbit pAb
<b>Host species</b>	Rabbit
<b>Applications</b>	WB;IHC;IF;ELISA
<b>Species Cross-Reactivity</b>	Human;Mouse;Rat
<b>Recommended dilutions</b>	Western Blot: 1/500 - 1/2000. Immunohistochemistry: 1/100 - 1/300. Immunofluorescence: 1/200 - 1/1000. ELISA: 1/20000. Not yet tested in other applications.
<b>Immunogen</b>	The antiserum was produced against synthesized peptide derived from human 14-3-3 $\theta$ et. AA range:41-90
<b>Specificity</b>	14-3-3 $\theta$ Polyclonal Antibody detects endogenous levels of 14-3-3 $\theta$ protein.
<b>Formulation</b>	Liquid in PBS containing 50% glycerol, 0.5% BSA and 0.02% sodium azide..
<b>Storage</b>	Store at -20°C. Avoid repeated freeze-thaw cycles.
<b>Protein Name</b>	14-3-3 protein theta
<b>Gene Name</b>	YWHAQ
<b>Cellular localization</b>	Cytoplasm. In neurons, axonally transported to the nerve terminals.
<b>Purification</b>	The antibody was affinity-purified from rabbit antiserum by affinity-chromatography using epitope-specific immunogen.
<b>Clonality</b>	Polyclonal

Explore. Bioreagents.

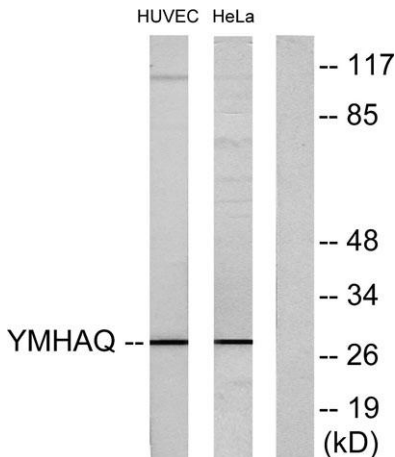
<b>Concentration</b>	1 mg/ml
<b>Observed band</b>	28kD
<b>Human Gene ID</b>	10971
<b>Human Swiss-Prot Number</b>	P27348
<b>Alternative Names</b>	YWHAQ; 14-3-3 protein theta; 14-3-3 protein T-cell; 14-3-3 protein tau; Protein HS1

**Background**

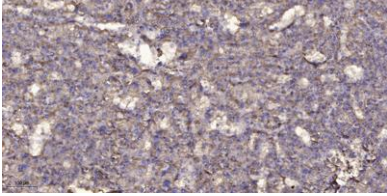
This gene product belongs to the 14-3-3 family of proteins which mediate signal transduction by binding to phosphoserine-containing proteins. This highly conserved protein family is found in both plants and mammals, and this protein is 99% identical to the mouse and rat orthologs. This gene is upregulated in patients with amyotrophic lateral sclerosis. It contains in its 5' UTR a 6 bp tandem repeat sequence which is polymorphic, however, there is no correlation between the repeat number and the disease. [provided by RefSeq, Jul 2008],



**Western Blot analysis of various cells using 14-3-3  $\theta$  Polyclonal Antibody diluted at 1:1000**



**Western blot analysis of lysates from HUVEC and HeLa cells, using 14-3-3  $\theta$  Antibody. The lane on the right is blocked with the synthesized peptide.**



**Immunohistochemical analysis of paraffin-embedded human liver cancer. 1, Antibody was diluted at 1:200(4° overnight). 2, Tris-EDTA,pH9.0 was used for antigen retrieval. 3,Secondary antibody was diluted at 1:200(room temperature, 45min).**