

**14-3-3  $\zeta$  rabbit pAb****Cat#: orb764418 (Manual)**

For research use only. Not intended for diagnostic use.

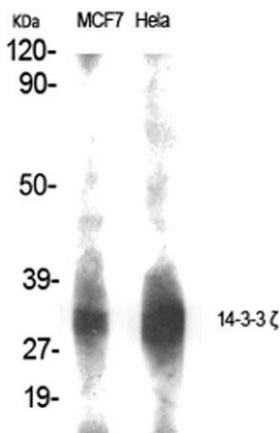
<b>Product Name</b>	14-3-3 $\zeta$ rabbit pAb
<b>Host species</b>	Rabbit
<b>Applications</b>	WB;IHC;IP;IF;ELISA
<b>Species Cross-Reactivity</b>	Human;Mouse;Rat
<b>Recommended dilutions</b>	Western Blot: 1/500 - 1/2000. Immunohistochemistry: 1/100 - 1/300. Immunoprecipitation: 2-5 ug/mg lysate. Immunofluorescence: 1/200 - 1/1000. ELISA: 1/40000. Not yet tested in other applications.
<b>Immunogen</b>	The antiserum was produced against synthesized peptide derived from human 14-3-3 zeta. AA range:24-73
<b>Specificity</b>	14-3-3 $\zeta$ Polyclonal Antibody detects endogenous levels of 14-3-3 $\zeta$ protein.
<b>Formulation</b>	Liquid in PBS containing 50% glycerol, 0.5% BSA and 0.02% sodium azide..
<b>Storage</b>	Store at -20°C. Avoid repeated freeze-thaw cycles.
<b>Protein Name</b>	14-3-3 protein zeta/delta
<b>Gene Name</b>	YWHAZ
<b>Cellular localization</b>	Cytoplasm . Melanosome . Located to stage I to stage IV melanosomes.
<b>Purification</b>	The antibody was affinity-purified from rabbit antiserum by affinity-chromatography using epitope-specific immunogen.
<b>Clonality</b>	Polyclonal

Explore. Bioreagents.

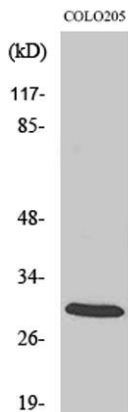
<b>Concentration</b>	1 mg/ml
<b>Observed band</b>	28kD
<b>Human Gene ID</b>	7534
<b>Human Swiss-Prot Number</b>	P63104
<b>Alternative Names</b>	YWHAZ; 14-3-3 protein zeta/delta; Protein kinase C inhibitor protein 1; KCIP-1

**Background**

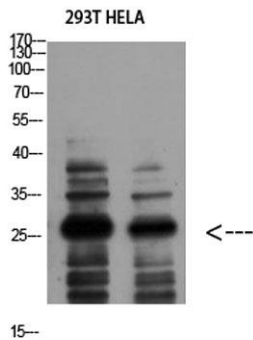
This gene product belongs to the 14-3-3 family of proteins which mediate signal transduction by binding to phosphoserine-containing proteins. This highly conserved protein family is found in both plants and mammals, and this protein is 99% identical to the mouse, rat and sheep orthologs. The encoded protein interacts with IRS1 protein, suggesting a role in regulating insulin sensitivity. Several transcript variants that differ in the 5' UTR but that encode the same protein have been identified for this gene. [provided by RefSeq, Oct 2008],



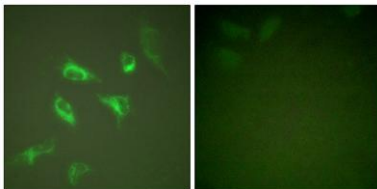
**Western Blot analysis of various cells using 14-3-3 ζ Polyclonal Antibody diluted at 1:1000**



**Western Blot analysis of COLO205 cells using 14-3-3 ζ Polyclonal Antibody diluted at 1:1000**



**Western Blot analysis of 293T HELA using 14-3-3  $\zeta$  Polyclonal Antibody diluted at 1:1000. Secondary antibody(catalog#:RS0002) was diluted at 1:20000**



**Immunofluorescence analysis of HeLa cells, using 14-3-3 zeta Antibody. The picture on the right is blocked with the synthesized peptide.**