

**MLK3 (phospho Ser674) rabbit pAb****Cat#: orb764410 (Manual)**

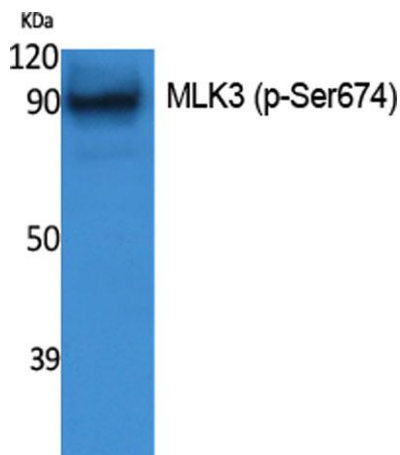
For research use only. Not intended for diagnostic use.

<b>Product Name</b>	MLK3 (phospho Ser674) rabbit pAb
<b>Host species</b>	Rabbit
<b>Applications</b>	WB;IHC
<b>Species Cross-Reactivity</b>	Human;Mouse;Rat
<b>Recommended dilutions</b>	WB 1:500-2000;IHC-p 1:50-300
<b>Immunogen</b>	Synthesized phospho-peptide around the phosphorylation site of human MLK3 (phospho Ser674)
<b>Specificity</b>	Phospho-MLK3 (S674) Polyclonal Antibody detects endogenous levels of MLK3 protein only when phosphorylated at S674.
<b>Formulation</b>	Liquid in PBS containing 50% glycerol, 0.5% BSA and 0.02% sodium azide..
<b>Storage</b>	Store at -20°C. Avoid repeated freeze-thaw cycles.
<b>Protein Name</b>	Mitogen-activated protein kinase kinase kinase 11
<b>Gene Name</b>	MAP3K11
<b>Cellular localization</b>	Cytoplasm, cytoskeleton, microtubule organizing center, centrosome . Location is cell cycle dependent.
<b>Purification</b>	The antibody was affinity-purified from rabbit antiserum by affinity-chromatography using epitope-specific immunogen.
<b>Clonality</b>	Polyclonal

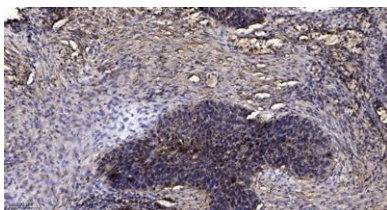
<b>Concentration</b>	1 mg/ml
<b>Observed band</b>	
<b>Human Gene ID</b>	4296
<b>Human Swiss-Prot Number</b>	Q16584
<b>Alternative Names</b>	MAP3K11; MLK3; PTK1; SPRK; Mitogen-activated protein kinase kinase 11; Mixed lineage kinase 3; Src-homology 3 domain-containing proline-rich kinase

**Background**

The protein encoded by this gene is a member of the serine/threonine kinase family. This kinase contains a SH3 domain and a leucine zipper-basic motif. This kinase preferentially activates MAPK8/JNK kinase, and functions as a positive regulator of JNK signaling pathway. This kinase can directly phosphorylate, and activates I $\kappa$ B kinase alpha and beta, and is found to be involved in the transcription activity of NF-kappaB mediated by Rho family GTPases and CDC42. [provided by RefSeq, Jul 2008],



Western Blot analysis of extracts from NIH-3T3 cells, using Phospho-MLK3 (S674) Polyclonal Antibody.



Immunohistochemical analysis of paraffin-embedded human Squamous cell carcinoma of lung. 1, Antibody was diluted at 1:200(4<sup>o</sup> overnight). 2, Tris-EDTA, pH9.0 was used for antigen retrieval. 3, Secondary antibody was diluted at 1:200(room temperature, 45min).



Explore. Bioreagents.

[www.biorbyt.com](http://www.biorbyt.com)