

Tensin-1 (phospho Tyr1326) rabbit pAb**Cat#: orb764406 (Manual)**

For research use only. Not intended for diagnostic use.

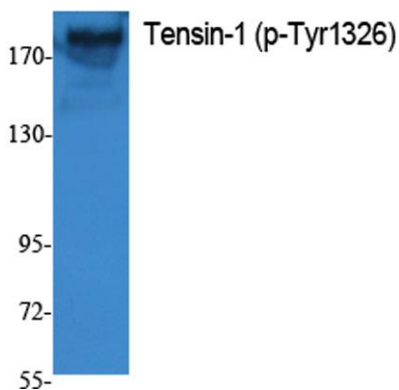
Product Name	Tensin-1 (phospho Tyr1326) rabbit pAb
Host species	Rabbit
Applications	WB;ELISA
Species Cross-Reactivity	Human;Mouse
Recommended dilutions	Western Blot: 1/500 - 1/2000. ELISA: 1/20000. Not yet tested in other applications.
Immunogen	Synthesized phospho-peptide around the phosphorylation site of human Tensin-1 (phospho Tyr1326)
Specificity	Phospho-Tensin-1 (Y1326) Polyclonal Antibody detects endogenous levels of Tensin-1 protein only when phosphorylated at Y1326.
Formulation	Liquid in PBS containing 50% glycerol, 0.5% BSA and 0.02% sodium azide..
Storage	Store at -20°C. Avoid repeated freeze-thaw cycles.
Protein Name	Tensin-1
Gene Name	TNS1
Cellular localization	Cell surface . Cell junction, focal adhesion . Cytoplasm, cytoskeleton . Localized at cell periphery preferentially to fibrillar adhesions than focal adhesions. Translocates from the cell edge to cell center in an ITGB1BP1-dependent manner.
Purification	The antibody was affinity-purified from rabbit antiserum by affinity-chromatography using epitope-specific immunogen.

Clonality	Polyclonal
Concentration	1 mg/ml
Observed band	185kD
Human Gene ID	7145
Human Swiss-Prot Number	Q9HBL0
Alternative Names	TNS1; TNS; Tensin-1

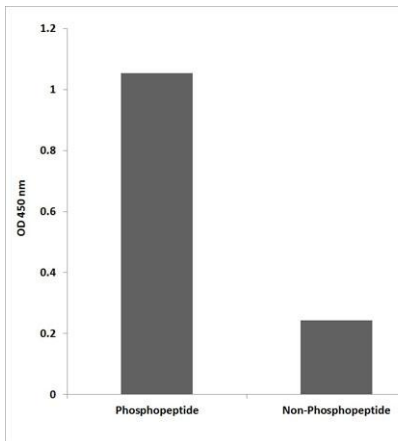
Background

The protein encoded by this gene localizes to focal adhesions, regions of the plasma membrane where the cell attaches to the extracellular matrix. This protein crosslinks actin filaments and contains a Src homology 2 (SH2) domain, which is often found in molecules involved in signal transduction. This protein is a substrate of calpain II. Alternative splicing results in multiple transcript variants encoding different isoforms. [provided by RefSeq, Apr 2015],

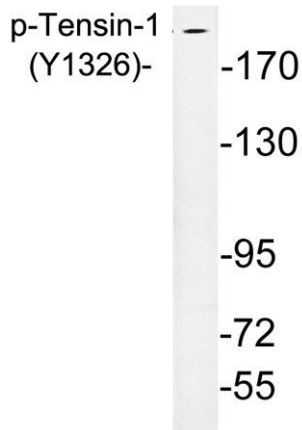
(kD)



Western Blot analysis of extracts from K562 cells, using Phospho-Tensin-1 (Y1326) Polyclonal Antibody.



Enzyme-Linked Immunosorbent Assay (Phospho-ELISA) for Immunogen Phosphopeptide (Phospho-left) and Non-Phosphopeptide (Phospho-right), using Tensin-1 (Phospho-Tyr1326) Antibody



Western blot analysis of lysates from A10 cells, using phospho-Tensin-1 (Phospho-Tyr1326) antibody.