

Calmodulin (phospho Thr80/S82) rabbit pAb**Cat#: orb764396 (Manual)**

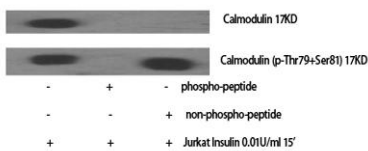
For research use only. Not intended for diagnostic use.

Product Name	Calmodulin (phospho Thr80/S82) rabbit pAb
Host species	Rabbit
Applications	WB;IHC;IF;ELISA
Species Cross-Reactivity	Human;Mouse;Rat
Recommended dilutions	Western Blot: 1/500 - 1/2000. Immunohistochemistry: 1/100 - 1/300. Immunofluorescence: 1/200 - 1/1000. ELISA: 1/5000. Not yet tested in other applications.
Immunogen	The antiserum was produced against synthesized peptide derived from human Calmodulin around the phosphorylation site of Thr79 and Ser81. AA range:46-95
Specificity	Phospho-Calmodulin (T80/S82) Polyclonal Antibody detects endogenous levels of Calmodulin protein only when phosphorylated at T80/S82.
Formulation	Liquid in PBS containing 50% glycerol, 0.5% BSA and 0.02% sodium azide..
Storage	Store at -20°C. Avoid repeated freeze-thaw cycles.
Protein Name	Calmodulin
Gene Name	CALM1
Cellular localization	spindle pole,extracellular region,nucleus,nucleoplasm,cytoplasm,centrosome,cytosol,spindle microtubule,plasma membrane,voltage-gated potassium channel complex,sarcomere,growth cone,vesicle,calcium channel complex,G
Purification	The antibody was affinity-purified from rabbit antiserum by affinity-chromatography using epitope-specific immunogen.

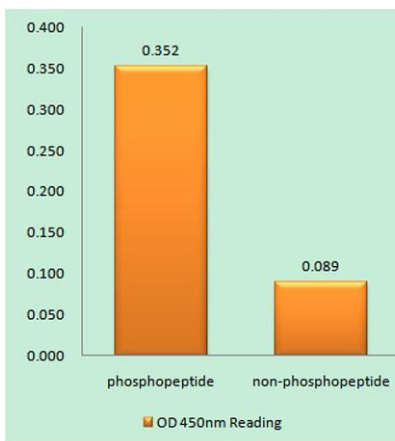
Clonality	Polyclonal
Concentration	1 mg/ml
Observed band	
Human Gene ID	801/805/808
Human Swiss-Prot Number	P62158
Alternative Names	CALM1; CALM; CAM; CAM1; CALM2; CAM2; CAMB; CALM3; CALML2; CAM3; CAMC; CAMIII; Calmodulin; CaM

Background

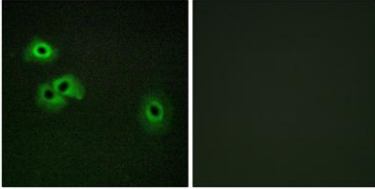
This gene encodes a member of the EF-hand calcium-binding protein family. It is one of three genes which encode an identical calcium binding protein which is one of the four subunits of phosphorylase kinase. Two pseudogenes have been identified on chromosome 7 and X. Multiple transcript variants encoding different isoforms have been found for this gene.[provided by RefSeq, Oct 2009],



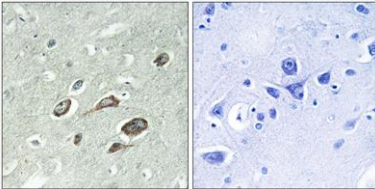
Western Blot analysis of various cells using Phospho-Calmodulin (T80/S82) Polyclonal Antibody



Enzyme-Linked Immunosorbent Assay (Phospho-ELISA) for Immunogen Phosphopeptide (Phospho-left) and Non-Phosphopeptide (Phospho-right), using Calmodulin (Phospho-Thr79+Ser81) Antibody



Immunofluorescence analysis of HepG2 cells, using Calmodulin (Phospho-Thr79+Ser81) Antibody. The picture on the right is blocked with the phospho peptide.



Immunohistochemistry analysis of paraffin-embedded human brain, using Calmodulin (Phospho-Thr79+Ser81) Antibody. The picture on the right is blocked with the phospho peptide.