

14-3-3 ζ (phospho Ser58) rabbit pAb**Cat#: orb764378 (Manual)**

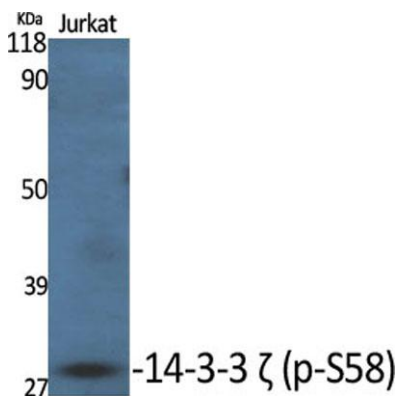
For research use only. Not intended for diagnostic use.

Product Name	14-3-3 ζ (phospho Ser58) rabbit pAb
Host species	Rabbit
Applications	WB;IHC;IF;ELISA
Species Cross-Reactivity	Human;Mouse;Rat
Recommended dilutions	Western Blot: 1/500 - 1/2000. Immunohistochemistry: 1/100 - 1/300. Immunofluorescence: 1/200 - 1/1000. ELISA: 1/40000. Not yet tested in other applications.
Immunogen	The antiserum was produced against synthesized peptide derived from human 14-3-3 zeta around the phosphorylation site of Ser58. AA range:24-73
Specificity	Phospho-14-3-3 ζ (S58) Polyclonal Antibody detects endogenous levels of 14-3-3 ζ protein only when phosphorylated at S58.
Formulation	Liquid in PBS containing 50% glycerol, 0.5% BSA and 0.02% sodium azide..
Storage	Store at -20°C. Avoid repeated freeze-thaw cycles.
Protein Name	14-3-3 protein zeta/delta
Gene Name	YWHAZ
Cellular localization	Cytoplasm . Melanosome . Located to stage I to stage IV melanosomes.
Purification	The antibody was affinity-purified from rabbit antiserum by affinity-chromatography using epitope-specific immunogen.
Clonality	Polyclonal

Concentration	1 mg/ml
Observed band	30kD
Human Gene ID	7534
Human Swiss-Prot Number	P63104
Alternative Names	YWHAZ; 14-3-3 protein zeta/delta; Protein kinase C inhibitor protein 1; KCIP-1

Background

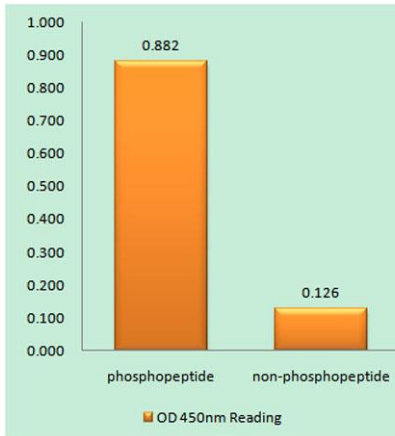
This gene product belongs to the 14-3-3 family of proteins which mediate signal transduction by binding to phosphoserine-containing proteins. This highly conserved protein family is found in both plants and mammals, and this protein is 99% identical to the mouse, rat and sheep orthologs. The encoded protein interacts with IRS1 protein, suggesting a role in regulating insulin sensitivity. Several transcript variants that differ in the 5' UTR but that encode the same protein have been identified for this gene. [provided by RefSeq, Oct 2008],



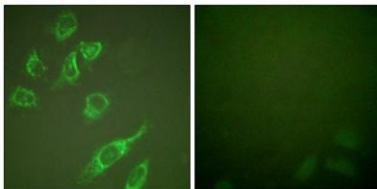
Western Blot analysis of various cells using Phospho-14-3-3 ζ (S58) Polyclonal Antibody diluted at 1:2000



Western Blot analysis of Jurkat cells using Phospho-14-3-3 ζ (S58) Polyclonal Antibody diluted at 1:2000



Enzyme-Linked Immunosorbent Assay (Phospho-ELISA) for Immunogen Phosphopeptide (Phospho-left) and Non-Phosphopeptide (Phospho-right), using 14-3-3 zeta (Phospho-Ser58) Antibody



Immunofluorescence analysis of HeLa cells treated with PMA 125ng/ml 30', using 14-3-3 zeta (Phospho-Ser58) Antibody. The picture on the right is blocked with the phospho peptide.