

**FAK (phospho Tyr397) rabbit pAb****Cat#: orb764367 (Manual)**

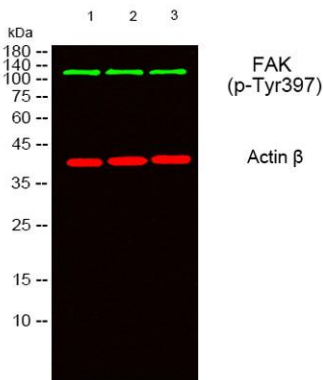
For research use only. Not intended for diagnostic use.

<b>Product Name</b>	FAK (phospho Tyr397) rabbit pAb
<b>Host species</b>	Rabbit
<b>Applications</b>	WB;IHC;IF;ELISA
<b>Species Cross-Reactivity</b>	Human;Mouse;Rat
<b>Recommended dilutions</b>	Western Blot: 1/500 - 1/2000. Immunohistochemistry: 1/100 - 1/300. ELISA: 1/5000. Not yet tested in other applications.
<b>Immunogen</b>	The antiserum was produced against synthesized peptide derived from human FAK around the phosphorylation site of Tyr397. AA range:363-412
<b>Specificity</b>	Phospho-FAK (Y397) Polyclonal Antibody detects endogenous levels of FAK protein only when phosphorylated at Y397.
<b>Formulation</b>	Liquid in PBS containing 50% glycerol, 0.5% BSA and 0.02% sodium azide..
<b>Storage</b>	Store at -20°C. Avoid repeated freeze-thaw cycles.
<b>Protein Name</b>	Focal adhesion kinase 1
<b>Gene Name</b>	PTK2
<b>Cellular localization</b>	Cell junction, focal adhesion. Cell membrane; Peripheral membrane protein; Cytoplasmic side. Cytoplasm, cell cortex. Cytoplasm, cytoskeleton. Cytoplasm, cytoskeleton, microtubule organizing center, centrosome . Nucleus. Cytoplasm, cytoskeleton, cilium basal body . Constituent of focal adhesions. Detected at microtubules.
<b>Purification</b>	The antibody was affinity-purified from rabbit antiserum by affinity-chromatography using epitope-specific immunogen.

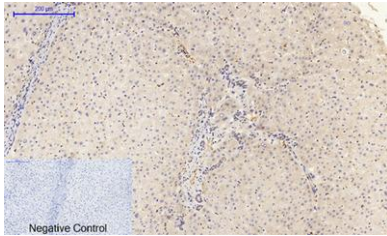
<b>Clonality</b>	Polyclonal
<b>Concentration</b>	1 mg/ml
<b>Observed band</b>	119kD
<b>Human Gene ID</b>	5747
<b>Human Swiss-Prot Number</b>	Q05397
<b>Alternative Names</b>	PTK2; FAK; FAK1; Focal adhesion kinase 1; FADK 1; Focal adhesion kinase-related nonkinase; FRNK; Protein phosphatase 1 regulatory subunit 71; PPP1R71; Protein-tyrosine kinase 2; p125FAK; pp125FAK

### Background

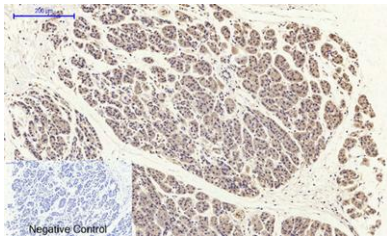
protein tyrosine kinase 2(PTK2) Homo sapiens This gene encodes a cytoplasmic protein tyrosine kinase which is found concentrated in the focal adhesions that form between cells growing in the presence of extracellular matrix constituents. The encoded protein is a member of the FAK subfamily of protein tyrosine kinases but lacks significant sequence similarity to kinases from other subfamilies. Activation of this gene may be an important early step in cell growth and intracellular signal transduction pathways triggered in response to certain neural peptides or to cell interactions with the extracellular matrix. Several transcript variants encoding different isoforms have been found for this gene, but the full-length nature of only four of them have been determined. [provided by RefSeq, Oct 2015],



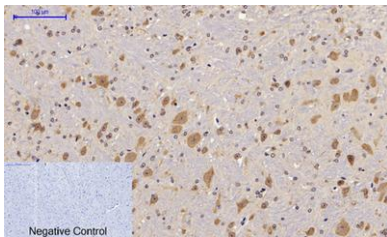
Western blot analysis of lysates from 1) 293T, 2) AD293 ,3) HeLa cells, (Green) primary antibody was diluted at 1:1000, 4° over night, secondary antibody(cat:RS23920)was diluted at 1:10000, 37° 1hour. (Red) Actin β Monoclonal Antibody(5B7) (cat:YM3028) antibody was diluted at 1:5000 as loading control, 4° over night,secondary antibody(cat:RS23710)was diluted at 1:10000, 37° 1hour.



**Immunohistochemical analysis of paraffin-embedded Human-liver tissue. 1,FAK (phospho Tyr397) Polyclonal Antibody was diluted at 1:200(4°C,overnight). 2, Sodium citrate pH 6.0 was used for antibody retrieval(>98°C,20min). 3,Secondary antibody was diluted at 1:200(room teMpeRature, 30min). Negative control was used by secondary antibody only.**



**Immunohistochemical analysis of paraffin-embedded Human-stomach-cancer tissue. 1,FAK (phospho Tyr397) Polyclonal Antibody was diluted at 1:200(4°C,overnight). 2, Sodium citrate pH 6.0 was used for antibody retrieval(>98°C,20min). 3,Secondary antibody was diluted at 1:200(room teMpeRature, 30min). Negative control was used by secondary antibody only.**



**Immunohistochemical analysis of paraffin-embedded Mouse-brain tissue. 1,FAK (phospho Tyr397) Polyclonal Antibody was diluted at 1:200(4°C,overnight). 2, Sodium citrate pH 6.0 was used for antibody retrieval(>98°C,20min). 3,Secondary antibody was diluted at 1:200(room teMpeRature, 30min). Negative control was used by secondary antibody only.**