

WNK1 (phospho Thr60) rabbit pAb**Cat#: orb764357 (Manual)**

For research use only. Not intended for diagnostic use.

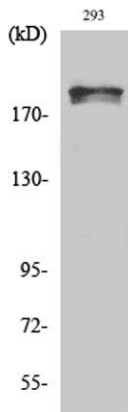
Product Name	WNK1 (phospho Thr60) rabbit pAb
Host species	Rabbit
Applications	WB;IHC;IF;ELISA
Species Cross-Reactivity	Human;Mouse;Rat
Recommended dilutions	Western Blot: 1/500 - 1/2000. Immunohistochemistry: 1/100 - 1/300. ELISA: 1/5000. Not yet tested in other applications.
Immunogen	The antiserum was produced against synthesized peptide derived from human WNK1 around the phosphorylation site of Thr58. AA range:24-73
Specificity	Phospho-WNK1 (T60) Polyclonal Antibody detects endogenous levels of WNK1 protein only when phosphorylated at T60.
Formulation	Liquid in PBS containing 50% glycerol, 0.5% BSA and 0.02% sodium azide..
Storage	Store at -20°C. Avoid repeated freeze-thaw cycles.
Protein Name	Serine/threonine-protein kinase WNK1
Gene Name	WNK1
Cellular localization	Cytoplasm .
Purification	The antibody was affinity-purified from rabbit antiserum by affinity-chromatography using epitope-specific immunogen.
Clonality	Polyclonal

Explore. Bioreagents.

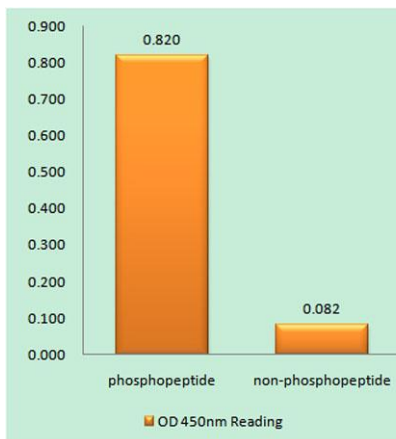
Concentration	1 mg/ml
Observed band	230kD
Human Gene ID	65125
Human Swiss-Prot Number	Q9H4A3
Alternative Names	WNK1; HSN2; KDP; KIAA0344; PRKWNK1; Serine/threonine-protein kinase WNK1; Erythrocyte 65 kDa protein; p65; Kinase deficient protein; Protein kinase lysine-deficient 1; Protein kinase with no lysine 1; hWNK1

Background

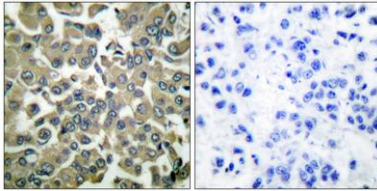
This gene encodes a member of the WNK subfamily of serine/threonine protein kinases. The encoded protein may be a key regulator of blood pressure by controlling the transport of sodium and chloride ions. Mutations in this gene have been associated with pseudohypoaldosteronism type II and hereditary sensory neuropathy type II. Alternatively spliced transcript variants encoding different isoforms have been described but the full-length nature of all of them has yet to be determined.[provided by RefSeq, May 2010],



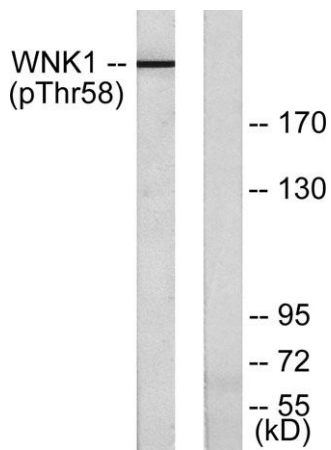
Western Blot analysis of various cells using Phospho-WNK1 (T60) Polyclonal Antibody



Enzyme-Linked Immunosorbent Assay (Phospho-ELISA) for Immunogen Phosphopeptide (Phospho-left) and Non-Phosphopeptide (Phospho-right), using WNK1 (Phospho-Thr58) Antibody



Immunohistochemistry analysis of paraffin-embedded human breast carcinoma, using WNK1 (Phospho-Thr58) Antibody. The picture on the right is blocked with the phospho peptide.



Western blot analysis of lysates from 293 cells treated with EGF 200ng/ml 30', using WNK1 (Phospho-Thr58) Antibody. The lane on the right is blocked with the phospho peptide.