

**Stat2 (phospho Tyr690) rabbit pAb****Cat#: orb764353 (Manual)**

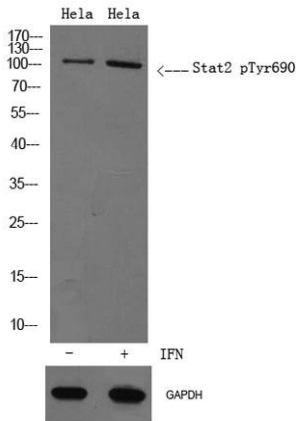
For research use only. Not intended for diagnostic use.

<b>Product Name</b>	Stat2 (phospho Tyr690) rabbit pAb
<b>Host species</b>	Rabbit
<b>Applications</b>	WB;IHC;IF;ELISA
<b>Species Cross-Reactivity</b>	Human;Rat
<b>Recommended dilutions</b>	Western Blot: 1/500 - 1/2000. Immunohistochemistry: 1/100 - 1/300. ELISA: 1/20000. Not yet tested in other applications.
<b>Immunogen</b>	The antiserum was produced against synthesized peptide derived from human STAT2 around the phosphorylation site of Tyr690. AA range:656-705
<b>Specificity</b>	Phospho-Stat2 (Y690) Polyclonal Antibody detects endogenous levels of Stat2 protein only when phosphorylated at Y690.
<b>Formulation</b>	Liquid in PBS containing 50% glycerol, 0.5% BSA and 0.02% sodium azide..
<b>Storage</b>	Store at -20°C. Avoid repeated freeze-thaw cycles.
<b>Protein Name</b>	Signal transducer and activator of transcription 2
<b>Gene Name</b>	STAT2
<b>Cellular localization</b>	Cytoplasm . Nucleus . Translocated into the nucleus upon activation by IFN-alpha/beta. .
<b>Purification</b>	The antibody was affinity-purified from rabbit antiserum by affinity-chromatography using epitope-specific immunogen.
<b>Clonality</b>	Polyclonal

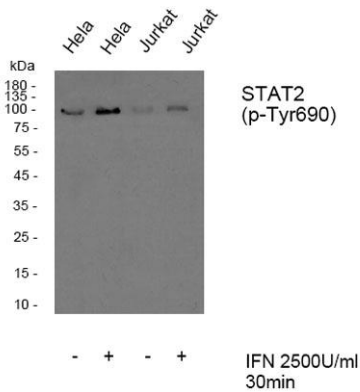
<b>Concentration</b>	1 mg/ml
<b>Observed band</b>	113kD
<b>Human Gene ID</b>	6773
<b>Human Swiss-Prot Number</b>	P52630
<b>Alternative Names</b>	STAT2; Signal transducer and activator of transcription 2; p113

**Background**

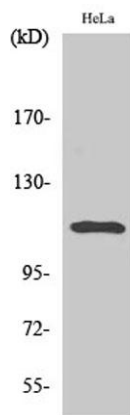
The protein encoded by this gene is a member of the STAT protein family. In response to cytokines and growth factors, STAT family members are phosphorylated by the receptor associated kinases, and then form homo- or heterodimers that translocate to the cell nucleus where they act as transcription activators. In response to interferon (IFN), this protein forms a complex with STAT1 and IFN regulatory factor family protein p48 (ISGF3G), in which this protein acts as a transactivator, but lacks the ability to bind DNA directly. Transcription adaptor P300/CBP (EP300/CREBBP) has been shown to interact specifically with this protein, which is thought to be involved in the process of blocking IFN-alpha response by adenovirus. Multiple transcript variants encoding different isoforms have been found for this gene. [provided by RefSeq, Mar 2010],



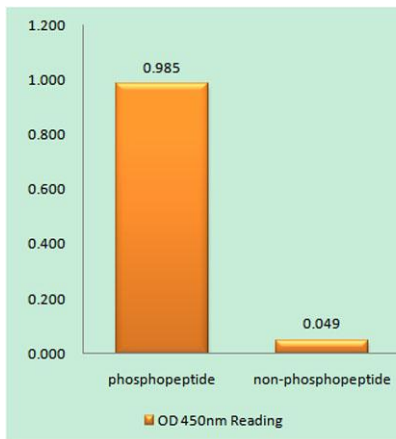
**Western blot analysis of lysates from HeLa cells treated with IFN 2500U/ml 30' , using Stat2 p-Thr690 Antibody. Primary Antibody was diluted at 1:1000 4° over night,secondary antibody(Immunoway cat:RS0002)was diluted at 1:10000, 37° 1hour.**



Western blot analysis of Stat2 (phospho Tyr690) Polyclonal Antibody, using HeLa, Jurkat cell treated or untreated with IFN 2500U/ml 30', 4° over night, secondary antibody (cat: RS0002 was diluted at 1:10000, 37° 1hour).



Western Blot analysis of various cells using Phospho-Stat2 (Y690) Polyclonal Antibody



Enzyme-Linked Immunosorbent Assay (Phospho-ELISA) for Immunogen Phosphopeptide (Phospho-left) and Non-Phosphopeptide (Phospho-right), using STAT2 (Phospho-Tyr690) Antibody