

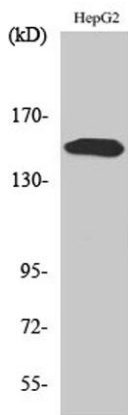
PLC γ 2 (phospho Tyr753) rabbit pAb**Cat#: orb764352 (Manual)**

For research use only. Not intended for diagnostic use.

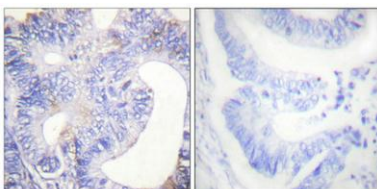
Product Name	PLC γ 2 (phospho Tyr753) rabbit pAb
Host species	Rabbit
Applications	WB;IHC;IF;ELISA
Species Cross-Reactivity	Human;Mouse;Rat
Recommended dilutions	Western Blot: 1/500 - 1/2000. Immunohistochemistry: 1/100 - 1/300. ELISA: 1/5000. Not yet tested in other applications.
Immunogen	The antiserum was produced against synthesized peptide derived from human PLCG2 around the phosphorylation site of Tyr753. AA range:721-770
Specificity	Phospho-PLC γ 2 (Y753) Polyclonal Antibody detects endogenous levels of PLC γ 2 protein only when phosphorylated at Y753.
Formulation	Liquid in PBS containing 50% glycerol, 0.5% BSA and 0.02% sodium azide..
Storage	Store at -20°C. Avoid repeated freeze-thaw cycles.
Protein Name	1-phosphatidylinositol 4,5-bisphosphate phosphodiesterase gamma-2
Gene Name	PLCG2
Cellular localization	intracellular,cytosol,plasma membrane,extracellular exosome,
Purification	The antibody was affinity-purified from rabbit antiserum by affinity-chromatography using epitope-specific immunogen.
Clonality	Polyclonal

Concentration	1 mg/ml
Observed band	148kD
Human Gene ID	5336
Human Swiss-Prot Number	P16885
Alternative Names	PLCG2; 1-phosphatidylinositol 4; 5-bisphosphate phosphodiesterase gamma-2; Phosphoinositide phospholipase C-gamma-2; Phospholipase C-IV; PLC-IV; Phospholipase C-gamma-2; PLC-gamma-2

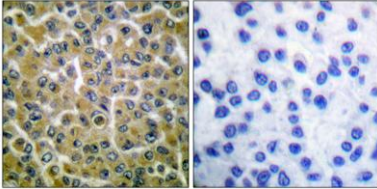
Background The protein encoded by this gene is a transmembrane signaling enzyme that catalyzes the conversion of 1-phosphatidyl-1D-myo-inositol 4,5-bisphosphate to 1D-myo-inositol 1,4,5-trisphosphate (IP3) and diacylglycerol (DAG) using calcium as a cofactor. IP3 and DAG are second messenger molecules important for transmitting signals from growth factor receptors and immune system receptors across the cell membrane. Mutations in this gene have been found in autoinflammation, antibody deficiency, and immune dysregulation syndrome and familial cold autoinflammatory syndrome 3. [provided by RefSeq, Mar 2014],



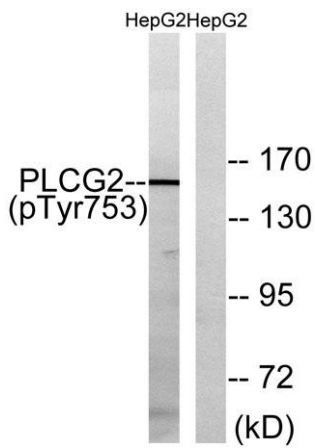
Western Blot analysis of various cells using Phospho-PLC γ 2 (Y753) Polyclonal Antibody



Immunohistochemical analysis of paraffin-embedded Human colon cancer. Antibody was diluted at 1:100(4° overnight). High-pressure and temperature Tris-EDTA,pH8.0 was used for antigen retrieval. Negative contrl (right) obtained from antibody was pre-absorbed by immunogen peptide.



Immunohistochemistry analysis of paraffin-embedded human breast carcinoma, using PLCG2 (Phospho-Tyr753) Antibody. The picture on the right is blocked with the phospho peptide.



Western blot analysis of lysates from HepG2 cells treated with Na_3VO_4 0.3mM 40', using PLCG2 (Phospho-Tyr753) Antibody. The lane on the right is blocked with the phospho peptide.