

PLC β 3 (phospho Ser1105) rabbit pAb**Cat#: orb764350 (Manual)**

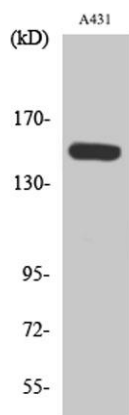
For research use only. Not intended for diagnostic use.

Product Name	PLC β 3 (phospho Ser1105) rabbit pAb
Host species	Rabbit
Applications	WB;IHC;IF;ELISA
Species Cross-Reactivity	Human;Mouse;Rat
Recommended dilutions	Western Blot: 1/500 - 1/2000. Immunohistochemistry: 1/100 - 1/300. ELISA: 1/10000. Not yet tested in other applications.
Immunogen	The antiserum was produced against synthesized peptide derived from human PLCB3 around the phosphorylation site of Ser1105. AA range:1071-1120
Specificity	Phospho-PLC β 3 (S1105) Polyclonal Antibody detects endogenous levels of PLC β 3 protein only when phosphorylated at S1105.
Formulation	Liquid in PBS containing 50% glycerol, 0.5% BSA and 0.02% sodium azide..
Storage	Store at -20°C. Avoid repeated freeze-thaw cycles.
Protein Name	1-phosphatidylinositol 4,5-bisphosphate phosphodiesterase beta-3
Gene Name	PLCB3
Cellular localization	Cytoplasm . Membrane . Nucleus . And particulate fractions. .
Purification	The antibody was affinity-purified from rabbit antiserum by affinity-chromatography using epitope-specific immunogen.
Clonality	Polyclonal

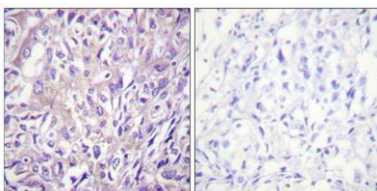
Concentration	1 mg/ml
Observed band	160kD
Human Gene ID	5331
Human Swiss-Prot Number	Q01970
Alternative Names	PLCB3; 1-phosphatidylinositol 4; 5-bisphosphate phosphodiesterase beta-3; Phosphoinositide phospholipase C-beta-3; Phospholipase C-beta-3; PLC-beta-3

Background

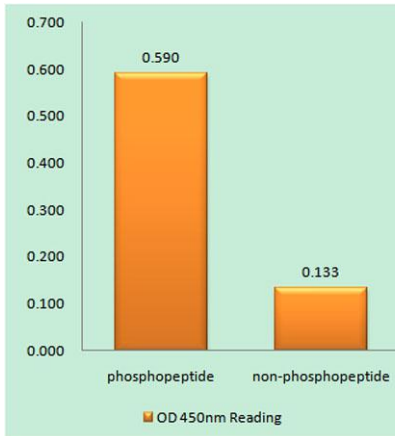
This gene encodes a member of the phosphoinositide phospholipase C beta enzyme family that catalyze the production of the secondary messengers diacylglycerol and inositol 1,4,5-triphosphate from phosphatidylinositol in G-protein-linked receptor-mediated signal transduction. Alternative splicing results in multiple transcript variants.[provided by RefSeq, May 2010],



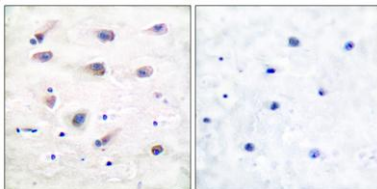
Western Blot analysis of various cells using Phospho-PLC β 3 (S1105) Polyclonal Antibody diluted at 1:1000



Immunohistochemical analysis of paraffin-embedded Human breast cancer. Antibody was diluted at 1:100(4° overnight). High-pressure and temperature Tris-EDTA,pH8.0 was used for antigen retrieval. Negative contrl (right) obtained from antibody was pre-absorbed by immunogen peptide.



Enzyme-Linked Immunosorbent Assay (Phospho-ELISA) for Immunogen Phosphopeptide (Phospho-left) and Non-Phosphopeptide (Phospho-right), using PLCB3 (Phospho-Ser1105) Antibody



Immunohistochemistry analysis of paraffin-embedded human brain, using PLCB3 (Phospho-Ser1105) Antibody. The picture on the right is blocked with the phospho peptide.