

Integrin β 3 (phospho Tyr785) rabbit pAb**Cat#: orb764321 (Manual)**

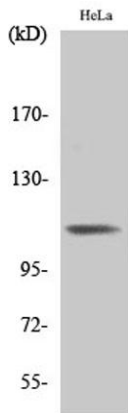
For research use only. Not intended for diagnostic use.

| | |
|---------------------------------|---|
| Product Name | Integrin β 3 (phospho Tyr785) rabbit pAb |
| Host species | Rabbit |
| Applications | IF;ELISA;IHC |
| Species Cross-Reactivity | Human;Mouse;Rat |
| Recommended dilutions | IF/ICC 1:50-300; ELISA 1:2000-20000; IHC-p 1:50-200 |
| Immunogen | The antiserum was produced against synthesized peptide derived from human Integrin beta3 around the phosphorylation site of Tyr785. AA range:739-788 |
| Specificity | Phospho-Integrin β 3 (Y785) Polyclonal Antibody detects endogenous levels of Integrin β 3 protein only when phosphorylated at Y785. |
| Formulation | Liquid in PBS containing 50% glycerol, 0.5% BSA and 0.02% sodium azide.. |
| Storage | Store at -20°C. Avoid repeated freeze-thaw cycles. |
| Protein Name | Integrin beta-3 |
| Gene Name | ITGB3 |
| Cellular localization | Cell membrane ; Single-pass type I membrane protein . Cell projection, lamellipodium membrane . Cell junction, focal adhesion . Cell junction, synapse, postsynaptic cell membrane ; Single-pass type I membrane protein . Cell junction, synapse . |
| Purification | The antibody was affinity-purified from rabbit antiserum by affinity-chromatography using epitope-specific immunogen. |

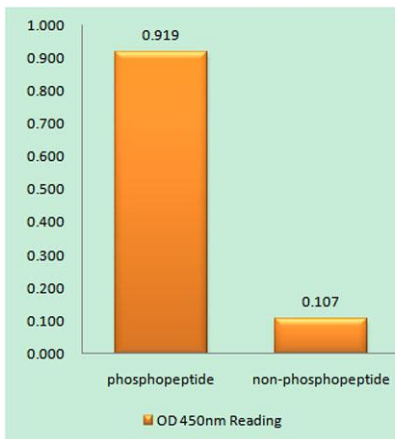
| | |
|--------------------------------|--|
| Clonality | Polyclonal |
| Concentration | 1 mg/ml |
| Observed band | 87kD |
| Human Gene ID | 3690 |
| Human Swiss-Prot Number | P05106 |
| Alternative Names | ITGB3; GP3A; Integrin beta-3; Platelet membrane glycoprotein IIIa; GPIIIa; CD antigen CD61 |

Background

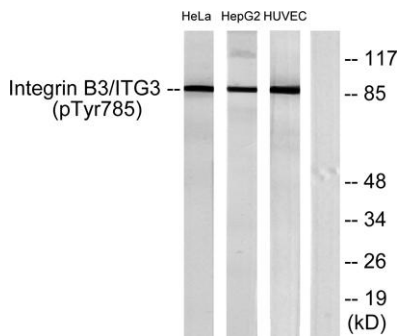
The ITGB3 protein product is the integrin beta chain beta 3. Integrins are integral cell-surface proteins composed of an alpha chain and a beta chain. A given chain may combine with multiple partners resulting in different integrins. Integrin beta 3 is found along with the alpha IIb chain in platelets. Integrins are known to participate in cell adhesion as well as cell-surface mediated signalling. [provided by RefSeq, Jul 2008],



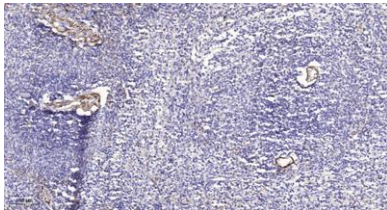
Western Blot analysis of various cells using Phospho-Integrin β 3 (Y785) Polyclonal Antibody diluted at 1:500



Enzyme-Linked Immunosorbent Assay (Phospho-ELISA) for Immunogen Phosphopeptide (Phospho-left) and Non-Phosphopeptide (Phospho-right), using Integrin beta3 (Phospho-Tyr785) Antibody



Western blot analysis of lysates from HeLa cells, HepG2 cells and HUVEC cells, using Integrin beta3 (Phospho-Tyr785) Antibody. The lane on the right is blocked with the phospho peptide.



Immunohistochemical analysis of paraffin-embedded human spleen. 1, Antibody was diluted at 1:200(4° overnight). 2, Tris-EDTA,pH9.0 was used for antigen retrieval. 3,Secondary antibody was diluted at 1:200(room temperature, 45min).