

GSK3 β (phospho Ser9) rabbit pAb**Cat#: orb764295 (Manual)**

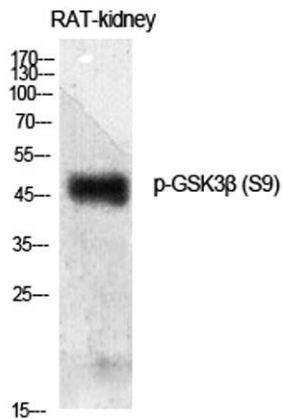
For research use only. Not intended for diagnostic use.

Product Name	GSK3 β (phospho Ser9) rabbit pAb
Host species	Rabbit
Applications	WB;IHC;IF;ELISA
Species Cross-Reactivity	Human;Mouse;Rat
Recommended dilutions	Western Blot: 1/500 - 1/2000. Immunohistochemistry: 1/100 - 1/300. ELISA: 1/10000. Not yet tested in other applications.
Immunogen	Synthesized phospho-peptide around the phosphorylation site of human GSK3 β (phospho Ser9)
Specificity	Phospho-GSK3 β (S9) Polyclonal Antibody detects endogenous levels of GSK3 β protein only when phosphorylated at S9.
Formulation	Liquid in PBS containing 50% glycerol, 0.5% BSA and 0.02% sodium azide..
Storage	Store at -20°C. Avoid repeated freeze-thaw cycles.
Protein Name	Glycogen synthase kinase-3 beta
Gene Name	GSK3B
Cellular localization	Cytoplasm . Nucleus . Cell membrane . The phosphorylated form shows localization to cytoplasm and cell membrane (PubMed:20937854). The MEMO1-RHOA-DIAPH1 signaling pathway controls localization of the phosphorylated form to the cell membrane (PubMed:20937854). .
Purification	The antibody was affinity-purified from rabbit antiserum by affinity-chromatography using epitope-specific immunogen.

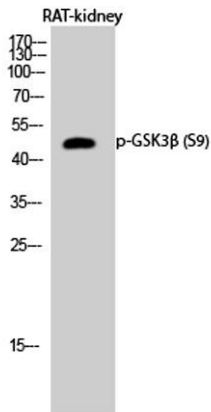
Clonality	Polyclonal
Concentration	1 mg/ml
Observed band	47kD
Human Gene ID	2932
Human Swiss-Prot Number	P49841
Alternative Names	GSK3B; Glycogen synthase kinase-3 beta; GSK-3 beta; Serine/threonine-protein kinase GSK3B

Background

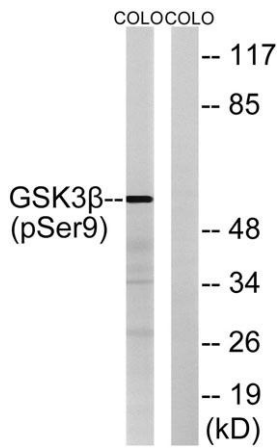
The protein encoded by this gene is a serine-threonine kinase, belonging to the glycogen synthase kinase subfamily. It is involved in energy metabolism, neuronal cell development, and body pattern formation. Polymorphisms in this gene have been implicated in modifying risk of Parkinson disease, and studies in mice show that overexpression of this gene may be relevant to the pathogenesis of Alzheimer disease. Alternatively spliced transcript variants encoding different isoforms have been found for this gene.[provided by RefSeq, Sep 2009],



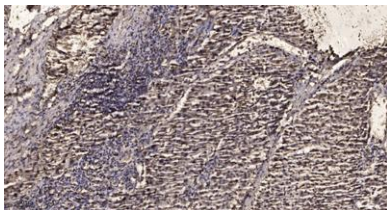
Western Blot analysis of various cells using Phospho-GSK3β (S9) Polyclonal Antibody diluted at 1:500



Western Blot analysis of RAT-kidney cells using Phospho-GSK3β (S9) Polyclonal Antibody diluted at 1:500



Western blot analysis of GSK3β (Phospho-Ser9) Antibody. The lane on the right is blocked with the GSK3β (Phospho-Ser9) peptide.



Immunohistochemical analysis of paraffin-embedded human liver cancer. 1, Antibody was diluted at 1:200(4° overnight). 2, Tris-EDTA,pH9.0 was used for antigen retrieval. 3,Secondary antibody was diluted at 1:200(room temperature, 45min).