

**Ephrin-B1/2 (phospho Tyr330) rabbit pAb****Cat#: orb764294 (Manual)**

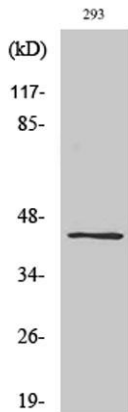
For research use only. Not intended for diagnostic use.

<b>Product Name</b>	Ephrin-B1/2 (phospho Tyr330) rabbit pAb
<b>Host species</b>	Rabbit
<b>Applications</b>	WB;ELISA
<b>Species Cross-Reactivity</b>	Human;Mouse;Rat
<b>Recommended dilutions</b>	Western Blot: 1/500 - 1/2000. ELISA: 1/40000. Not yet tested in other applications.
<b>Immunogen</b>	The antiserum was produced against synthesized peptide derived from human EFNB1/2 around the phosphorylation site of Tyr330. AA range:284-333
<b>Specificity</b>	Phospho-Ephrin-B1/2 (Y330) Polyclonal Antibody detects endogenous levels of Ephrin-B1/2 protein only when phosphorylated at Y330.
<b>Formulation</b>	Liquid in PBS containing 50% glycerol, 0.5% BSA and 0.02% sodium azide..
<b>Storage</b>	Store at -20°C. Avoid repeated freeze-thaw cycles.
<b>Protein Name</b>	Ephrin-B1/Ephrin-B2
<b>Gene Name</b>	EFNB1/EFNB2
<b>Cellular localization</b>	Cell membrane ; Single-pass type I membrane protein . Membrane raft . May recruit GRIP1 and GRIP2 to membrane raft domains. . ; [Ephrin-B1 C-terminal fragment]: Cell membrane ; Single-pass type I membrane protein . ; [Ephrin-B1 intracellular domain]: Nucleus . Colocalizes with ZHX2 in the nucleus. .
<b>Purification</b>	The antibody was affinity-purified from rabbit antiserum by affinity-chromatography using epitope-specific immunogen.

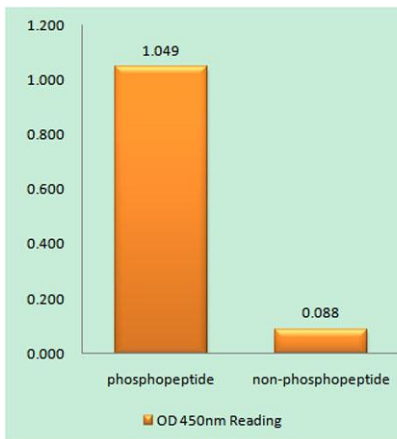
<b>Clonality</b>	Polyclonal
<b>Concentration</b>	1 mg/ml
<b>Observed band</b>	59kD
<b>Human Gene ID</b>	1947/1948
<b>Human Swiss-Prot Number</b>	P98172/P52799
<b>Alternative Names</b>	EFNB1; EFL3; EPLG2; LERK2; Ephrin-B1; EFL-3; ELK ligand; ELK-L; EPH-related receptor tyrosine kinase ligand 2; LERK-2; EFNB2; EPLG5; HTKL; LERK5; Ephrin-B2; EPH-related receptor tyrosine kinase ligand 5; LERK-5; HTK ligand; HTK-L

**Background**

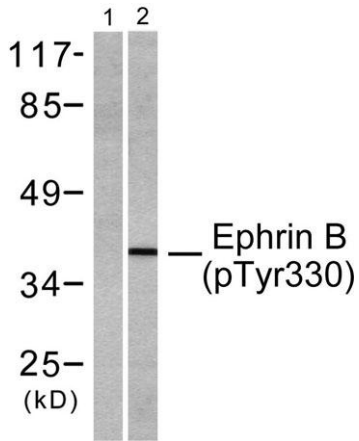
The protein encoded by this gene is a type I membrane protein and a ligand of Eph-related receptor tyrosine kinases. It may play a role in cell adhesion and function in the development or maintenance of the nervous system. [provided by RefSeq, Jul 2008],



**Western Blot analysis of various cells using Phospho-Ephrin-B1/2 (Y330) Polyclonal Antibody**



**Enzyme-Linked Immunosorbent Assay (Phospho-ELISA) for Immunogen Phosphopeptide (Phospho-left) and Non-Phosphopeptide (Phospho-right), using EFNB1/2 (Phospho-Tyr330) Antibody**



Western blot analysis of lysates from 293 cells treated with TNF- $\alpha$  20ng/ml 30', using EFNB1/2 (Phospho-Tyr330) Antibody. The lane on the left is blocked with the phospho peptide.