

**Stat6 (phospho Tyr641) rabbit pAb****Cat#: orb764284 (Manual)**

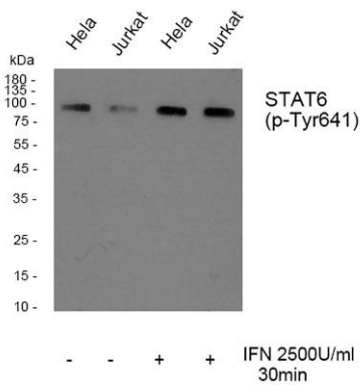
For research use only. Not intended for diagnostic use.

<b>Product Name</b>	Stat6 (phospho Tyr641) rabbit pAb
<b>Host species</b>	Rabbit
<b>Applications</b>	WB;IHC;IF;ELISA
<b>Species Cross-Reactivity</b>	Human;Mouse;Rat
<b>Recommended dilutions</b>	Western Blot: 1/500 - 1/2000. Immunohistochemistry: 1/100 - 1/300. ELISA: 1/10000. Not yet tested in other applications.
<b>Immunogen</b>	The antiserum was produced against synthesized peptide derived from human STAT6 around the phosphorylation site of Tyr641. AA range:608-657
<b>Specificity</b>	Phospho-Stat6 (Y641) Polyclonal Antibody detects endogenous levels of Stat6 protein only when phosphorylated at Y641.
<b>Formulation</b>	Liquid in PBS containing 50% glycerol, 0.5% BSA and 0.02% sodium azide..
<b>Storage</b>	Store at -20°C. Avoid repeated freeze-thaw cycles.
<b>Protein Name</b>	Signal transducer and activator of transcription 6
<b>Gene Name</b>	STAT6
<b>Cellular localization</b>	Cytoplasm. Nucleus. Translocated into the nucleus in response to phosphorylation.
<b>Purification</b>	The antibody was affinity-purified from rabbit antiserum by affinity-chromatography using epitope-specific immunogen.
<b>Clonality</b>	Polyclonal

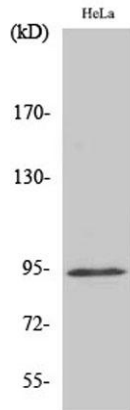
<b>Concentration</b>	1 mg/ml
<b>Observed band</b>	94kD
<b>Human Gene ID</b>	6778
<b>Human Swiss-Prot Number</b>	P42226
<b>Alternative Names</b>	STAT6; Signal transducer and activator of transcription 6; IL-4 Stat

### Background

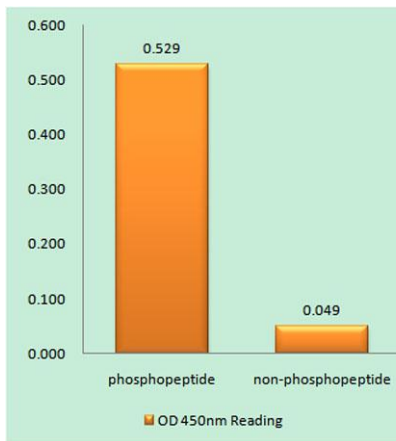
The protein encoded by this gene is a member of the STAT family of transcription factors. In response to cytokines and growth factors, STAT family members are phosphorylated by the receptor associated kinases, and then form homo- or heterodimers that translocate to the cell nucleus where they act as transcription activators. This protein plays a central role in exerting IL4 mediated biological responses. It is found to induce the expression of BCL2L1/BCL-X(L), which is responsible for the anti-apoptotic activity of IL4. Knockout studies in mice suggested the roles of this gene in differentiation of T helper 2 (Th2) cells, expression of cell surface markers, and class switch of immunoglobulins. Alternative splicing results in multiple transcript variants.[provided by RefSeq, May 2010],



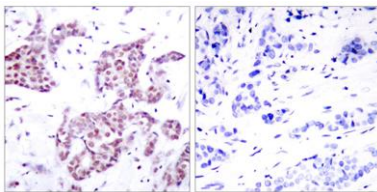
**Western blot analysis of Stat6 (phospho Tyr641) Polyclonal Antibody, using HeLa, Jurkat cell treated or untreated with IFN 2500U/ml 30', 4° over night, secondary antibody (cat: RS0002 was diluted at 1:10000, 37° 1hour).**



**Western Blot analysis of various cells using Phospho-Stat6 (Y641) Polyclonal Antibody**



**Enzyme-Linked Immunosorbent Assay (Phospho-ELISA) for Immunogen Phosphopeptide (Phospho-left) and Non-Phosphopeptide (Phospho-right), using STAT6 (Phospho-Tyr641) Antibody**



**Immunohistochemistry analysis of paraffin-embedded human breast carcinoma, using STAT6 (Phospho-Tyr641) Antibody. The picture on the right is blocked with the phospho peptide.**